

Central Sanskrit University

Jaipur Campus

(Established by an Act of Parliament)

(Formerly Rashtriya Sanskrit Sansthan, Deemed to be University)

Under Ministry of Education, Govt. of India

FEEDBACK ANALYSIS REPORT

2017-18 to 2021-22



DEPARTMENT OF JYOTISH



Address for correspondence

Gopalpura Bypass, Triveni Nagar Jaipur, Pin (302018)

Tel.No: 0141-2761115, Fax No: 0141-2760686

E mail: csujaipur@gmail.com website: <http://csu-jaipur.edu.in/>

Central Sanskrit University, Jaipur Campus

Established by an Act of Parliament

Under Ministry of Education

Government of India

Summary of the Feedback Analysis

National Assessment and Accreditation Council (NAAC)

Department of Jyotishastra

INDEX

S No.	Feedback Summary	Page. No.
1.	Analysis and Graph of Students Feedback	3-42
2.	Analysis and Graph of Parents Feedback	43-48
3.	Analysis and Graph of Alumni Feedback	49-54
4.	Analysis and Graph of Employers Feedback	55-64
5.	Analysis and Graph of Teachers Feedback	65-74

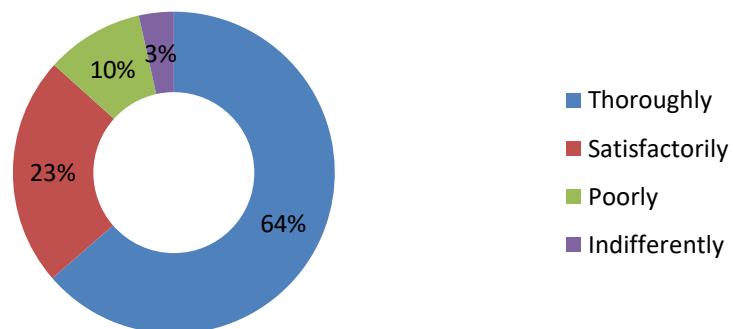
Analysis and Graph of Students Feedback

In this feedback form a special four to five-point scales on the curriculum is developed. For students, it addressed curriculum and its learning related issues in terms of quality, competence, skills and professionalism. This feedback also considers other issues like delivery of curriculum by teachers.

Students Feedback 2021-22

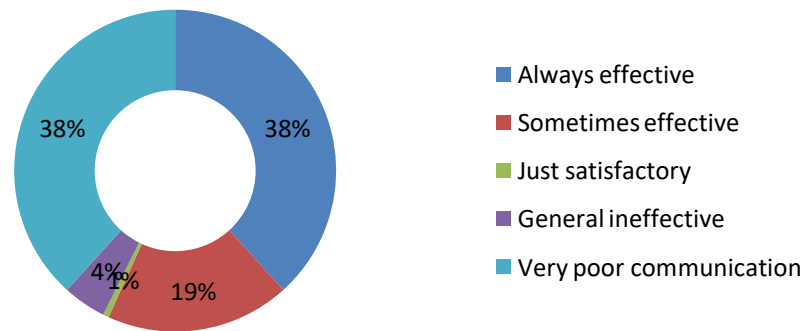
Q1 How well did the teachers prepare for the classes?	
Thoroughly	63.47
Satisfactorily	23
Poorly	9.82
Indifferently	3.49

Q1 How well did the teachers prepare for the classes?



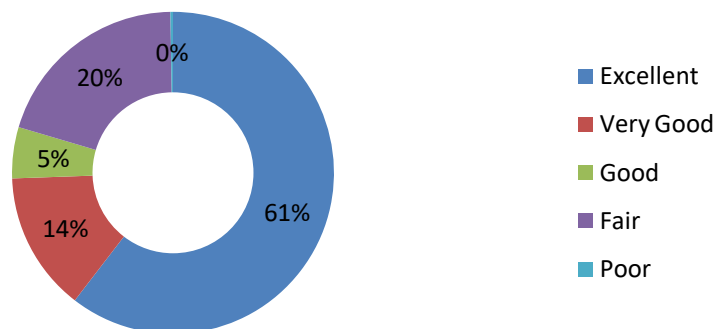
Q2 How well were the teachers able to communicate?	
Always effective	62
Sometimes effective	30
Just satisfactory	0.96
General ineffective	7.04
Very poor communication	62

Q2 How well were the teachers able to communicate?



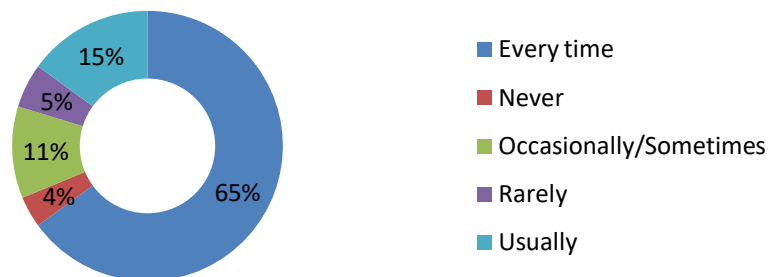
Q3 The teacher's approach to teaching can best be described as	
Excellent	60.44
Very Good	14
Good	5.14
Fair	20.16
Poor	0.26

Q3 The teacher's approach to teaching can best be described as



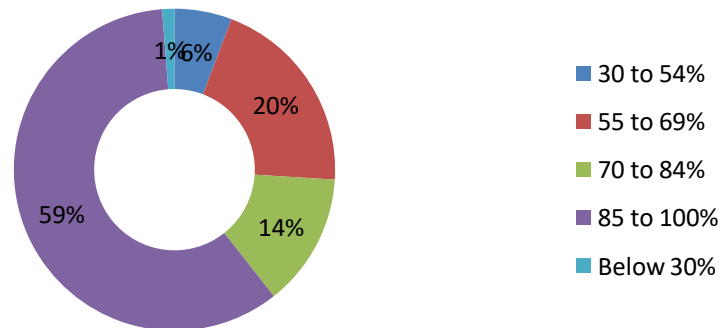
Q4 The teachers illustrate the concepts through examples and applications	
Every time	65
Never	3.74
Occasionally/Sometimes	10.98
Rarely	5.28
Usually	15

Q4 The teachers illustrate the concepts through examples and applications



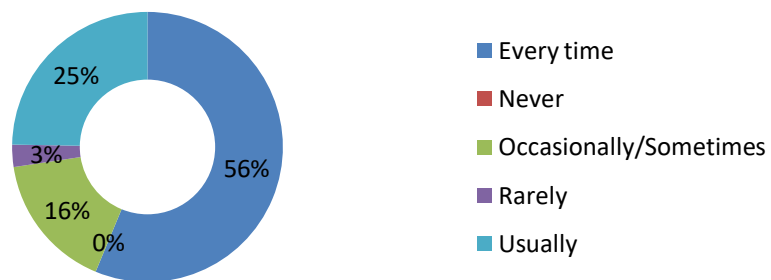
Q5 How much of the syllabus was covered in the class?	
30 to 54%	5.76
55 to 69%	20.23
70 to 84%	13.41
85 to 100%	59.37
Below 30%	1.23

Q5 How much of the syllabus was covered in the class?



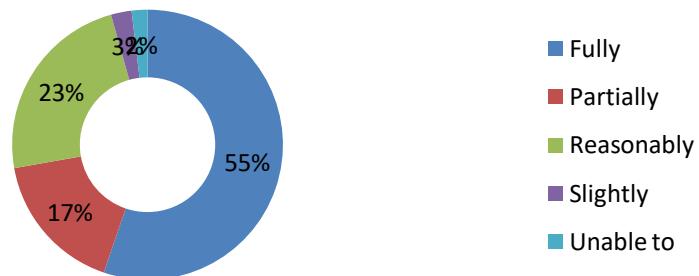
Q6 Teachers inform you about your expected competencies, course outcomes and program outcomes	
Every time	56.27
Never	0
Occasionally/Sometimes	16.35
Rarely	2.66
Usually	24.72

Q6 Teachers inform you about your expected competencies, course outcomes and program outcomes



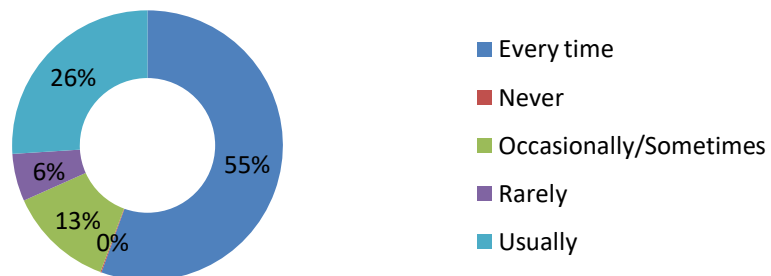
Q7 The teachers identify your strengths and encourage you with providing right level of challenges	
Fully	55.25
Partially	16.98
Reasonably	23.41
Slightly	2.47
Unable to	1.89

Q7 The teachers identify your strengths and encourage you with providing right level of challenges



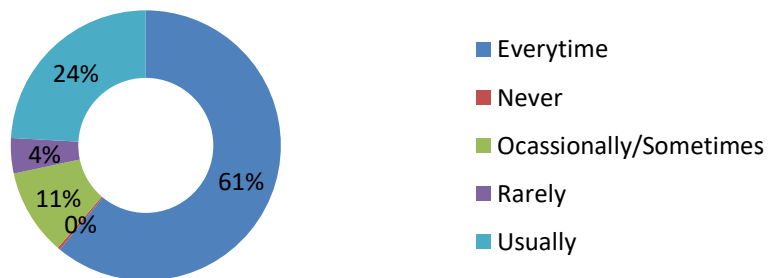
Q8 Teachers are able to identify your weaknesses and help you to overcome them	
Every time	55.54
Never	0.12
Occasionally/Sometimes	12.66
Rarely	5.68
Usually	26

Q8 Teachers are able to identify your weaknesses and help you to overcome them



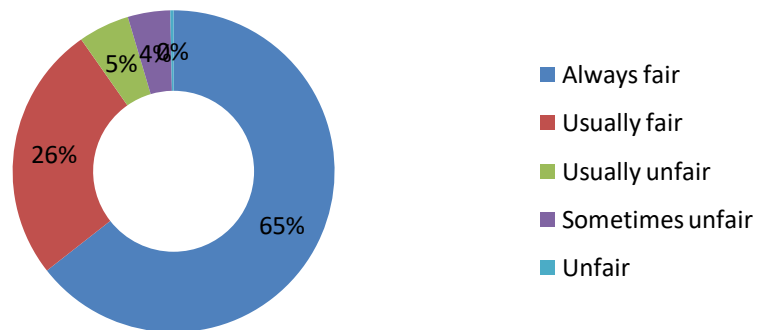
Q9 Teachers encourage you to participate in extracurricular activities	
Every time	60.98
Never	0.32
Occasionally/Sometimes	10.35
Rarely	4.23
Usually	24.12

Q9 Teachers encourage you to participate in extracurricular activities



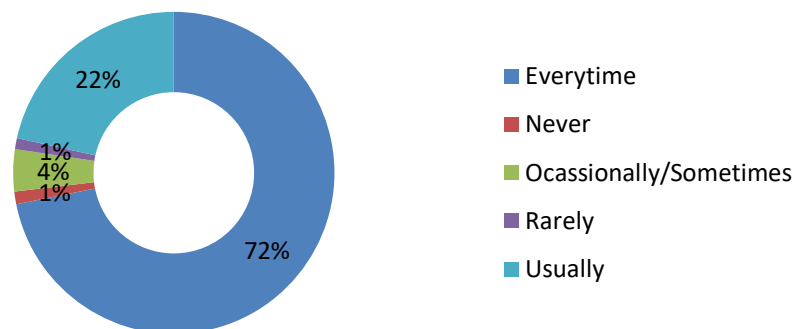
Q10 Fairness of the internal evaluation process by the teachers	
Always fair	64.42
Usually fair	25.85
Usually unfair	5.14
Sometimes unfair	4.26
Unfair	0.33

Q10 Fairness of the internal evaluation process by the teachers



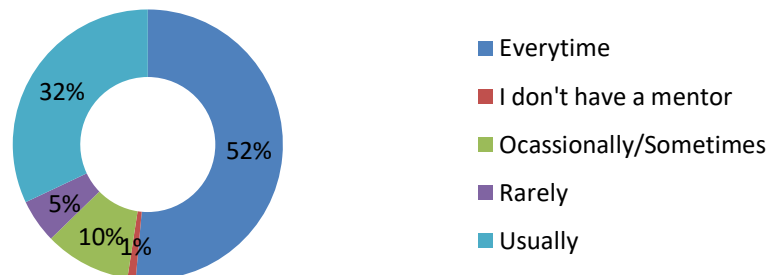
Q11 Was your performance in assignments discussed with you?	
Every time	71.86
Never	1.27
Occasionally/Sometimes	4.23
Rarely	1.11
Usually	21.53

Q11 Was your performance in assignments discussed with you?



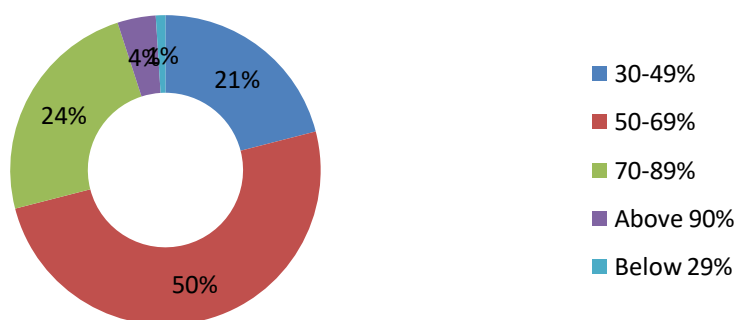
Q12 Your mentor does a necessary follow-up with an assigned task to you	
Every time	51.43
I don't have a mentor	0.98
Occasionally/Sometimes	10.32
Rarely	5.25
Usually	32.02

Q12 Your mentor does a necessary follow-up with an assigned task to you



Q13 What percentage of teachers use ICT tools such as LCD projectors, Multimedia, etc. while teaching	
30-49%	21
50-69%	50
70-89%	24
Above 90%	4
Below 29%	1

Q13 What percentage of teachers use ICT tools such as LCD projectors, Multimedia, etc. while teaching



Q14 The institute takes an active interest in promoting internship, student exchange, field visit opportunities for students

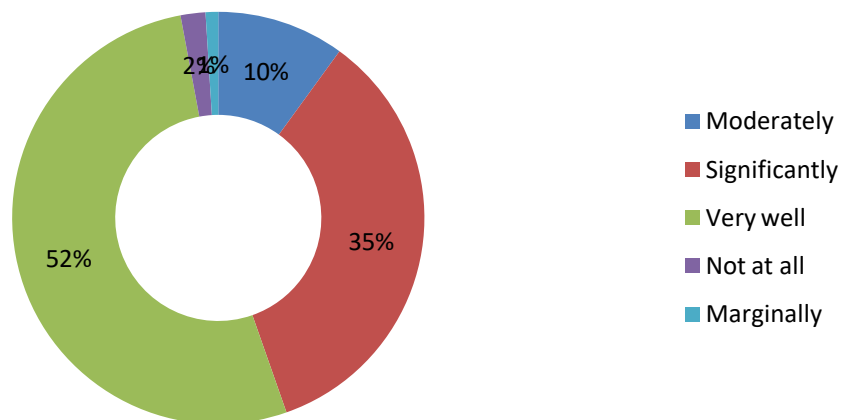
Regularly	42.24
Never	1.99
Sometimes	30.6
Rarely	3.6
Often	21.57

Q14 The institute takes an active interest in promoting internship, student exchange, field visit opportunities for students



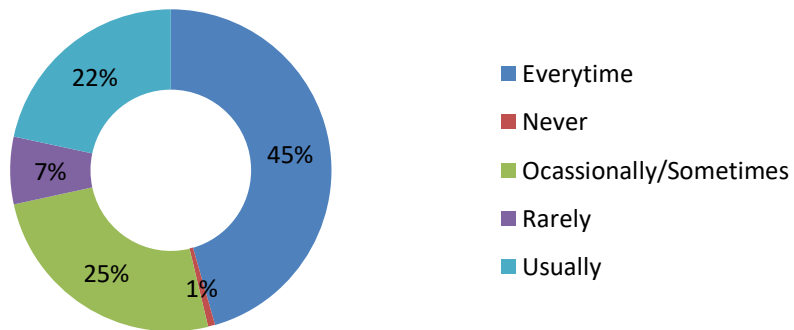
Q15 The teaching and mentoring process in your institution facilitates you in cognitive, social and emotional growth	
Moderately	10.01
Significantly	34.62
Very well	52.43
Not at all	1.95
Marginally	0.99

Q15 The teaching and mentoring process in your institution facilitates you in cognitive, social and emotional growth



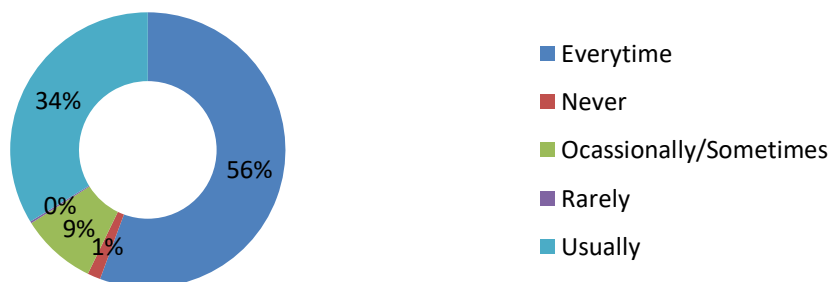
Q16 The institution provides multiple opportunities to learn and grow	
Every time	45.56
Never	0.71
Occasionally/Sometimes	25.32
Rarely	6.78
Usually	21.63

Q16 The institution provides multiple opportunities to learn and grow



Q17 The institution makes effort to engage students in the monitoring, review, and continuous quality improvement of the teaching learning process	
Every time	55.64
Never	1.53
Occasionally/Sometimes	8.9
Rarely	0.22
Usually	33.71

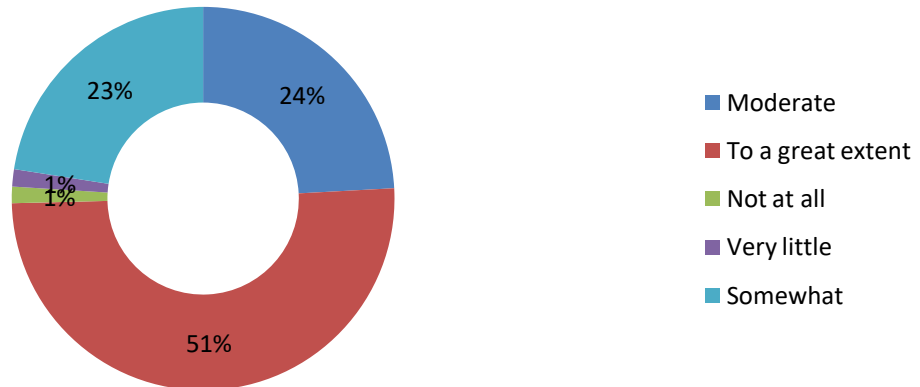
Q17 The institution makes effort to engage students in the monitoring, review, and continuous quality improvement of the teaching learning process



Q18 The institute/ teachers use student centric methods, such as experiential learning, participative learning, and problem-solving methodologies for enhancing learning experiences

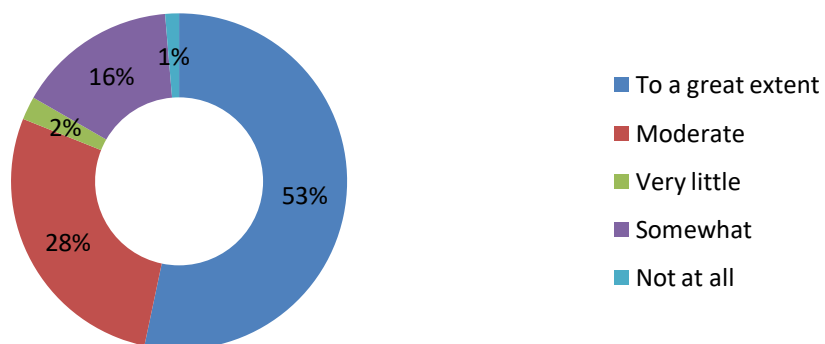
Moderate	24.14
To a great extent	50.47
Not at all	1.39
Very little	1.46
Somewhat	22.54

Q18 The institute/ teachers use student centric methods, such as experiential learning, participative learning, and problem-solving methodologies for enhancing learning experiences



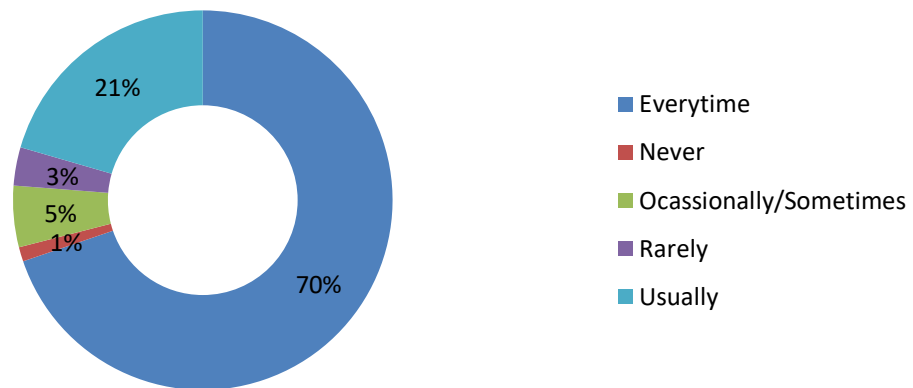
Q19 Efforts are made by the institute/ teachers to inculcate soft skills, life skills and employability skills to make you ready for the world of work	
To a great extent	53.31
Moderate	27.75
Very little	2.24
Somewhat	15.37
Not at all	1.33

Q19 Efforts are made by the institute/ teachers to inculcate soft skills, life skills and employability skills to make you ready for the world of work



Q20 The overall quality of teaching-learning process in your institute is very good	
Every time	69.86
Never	1.23
Occasionally/Sometimes	5.23
Rarely	3.27
Usually	20.53

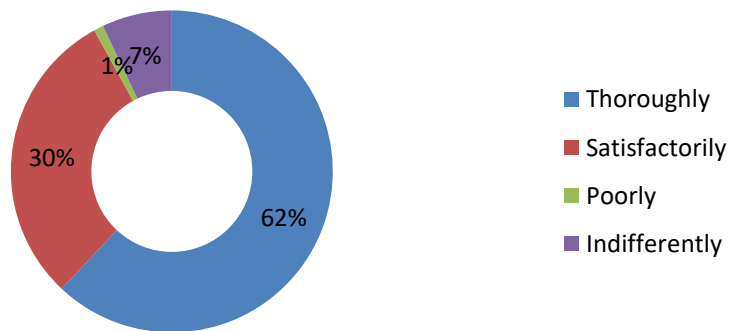
Q20 The overall quality of teaching-learning process in your institute is very good



Feedback of Students 2020-21

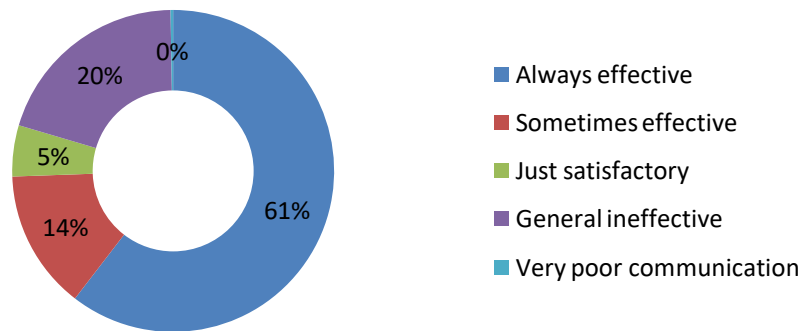
Q1 How well did the teachers prepare for the classes?	
Thoroughly	62
Satisfactorily	30
Poorly	0.96
Indifferently	7.04

Q1 How well did the teachers prepare for the classes?



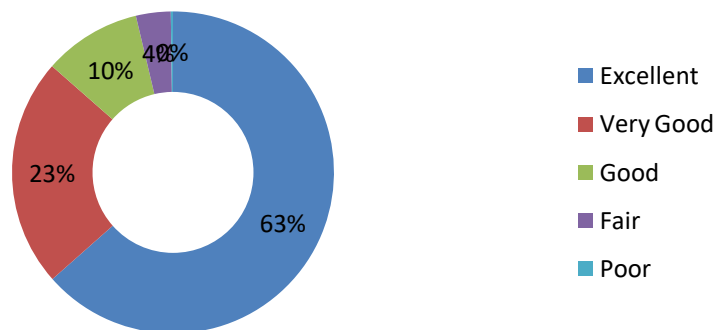
Q2 How well were the teachers able to communicate?	
Always effective	60.44
Sometimes effective	14
Just satisfactory	5.14
General ineffective	20.16
Very poor communication	0.26

Q2 How well were the teachers able to communicate?



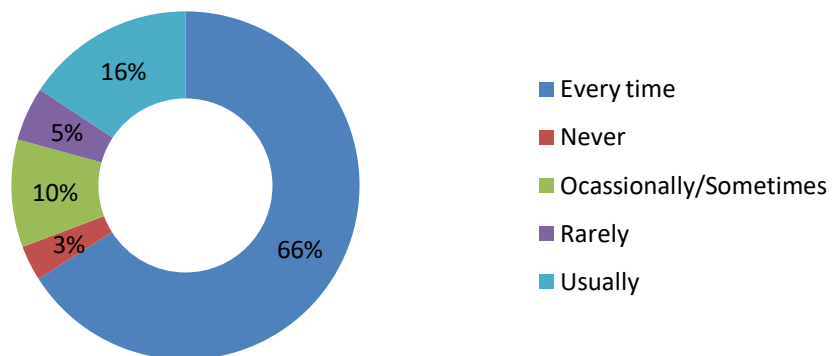
Q3 The teacher's approach to teaching can best be described as	
Excellent	63.47
Very Good	23
Good	9.82
Fair	3.49
Poor	0.22

Q3 The teacher's approach to teaching can best be described as



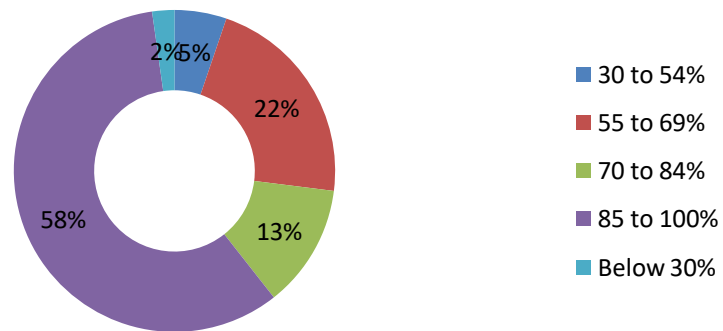
Q4 The teachers illustrate the concepts through examples and applications	
Every time	65.98
Never	3.28
Occasionally/Sometimes	10
Rarely	5
Usually	15.74

Q4 The teachers illustrate the concepts through examples and applications



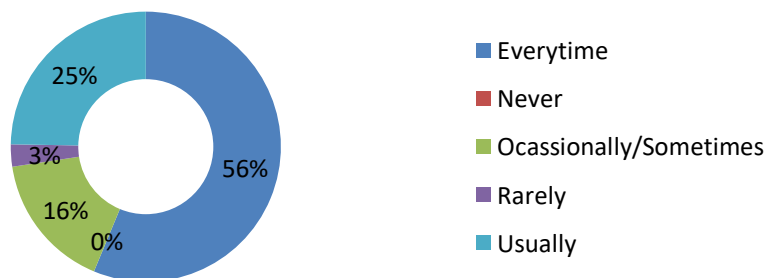
Q5 How much of the syllabus was covered in the class?	
30 to 54%	5.23
55 to 69%	21.76
70 to 84%	12.41
85 to 100%	58.37
Below 30%	2.23

Q5 How much of the syllabus was covered in the class?



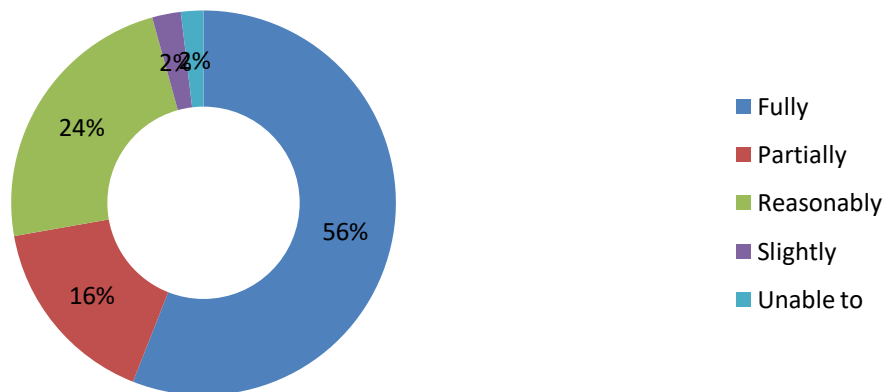
Q6 Teachers inform you about your expected competencies, course outcomes and program outcomes	
Every time	56.27
Never	0
Occasionally/Sometimes	16.35
Rarely	2.66
Usually	24.72

Q6 Teachers inform you about your expected competencies, course outcomes and programme outcomes



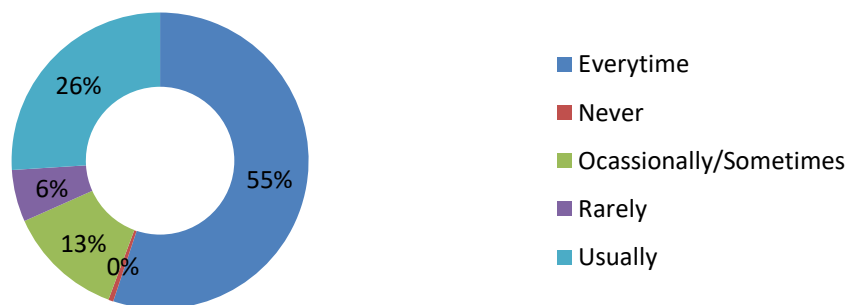
Q7 The teachers identify your strengths and encourage you with providing right level of challenges	
Fully	55.98
Partially	16.25
Reasonably	23.47
Slightly	2.41
Unable to	1.89

Q7 The teachers identify your strengths and encourage you with providing right level of challenges



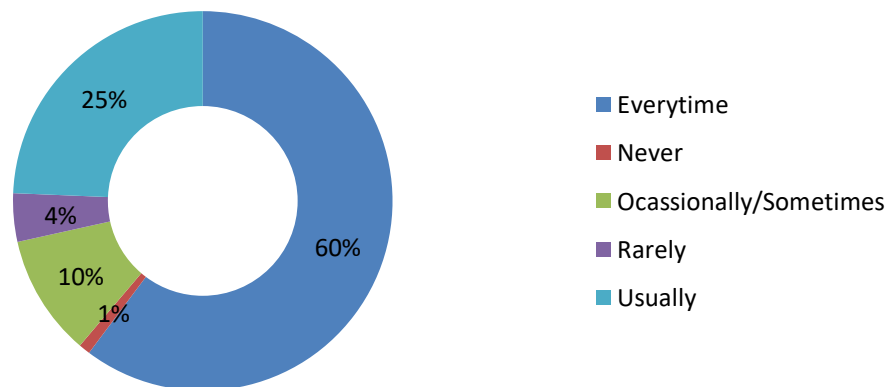
Q8 Teachers are able to identify your weaknesses and help you to overcome them	
Every time	55.12
Never	0.54
Occasionally/Sometimes	12.68
Rarely	5.66
Usually	26

Q8 Teachers are able to identify your weaknesses and help you to overcome them



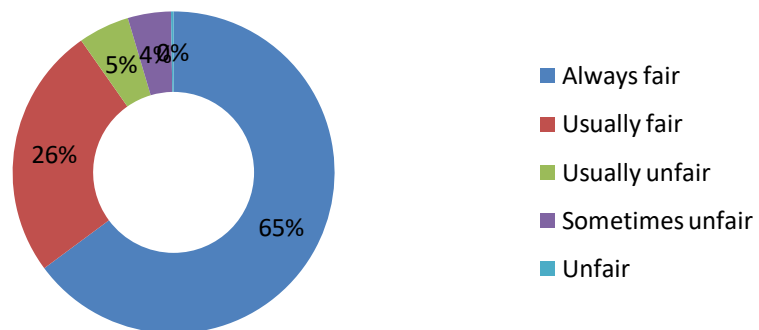
Q9 Teachers encourage you to participate in extracurricular activities	
Every time	60.23
Never	0.98
Occasionally/Sometimes	10.32
Rarely	4.12
Usually	24.35

Q9 Teachers encourage you to participate in extracurricular activities



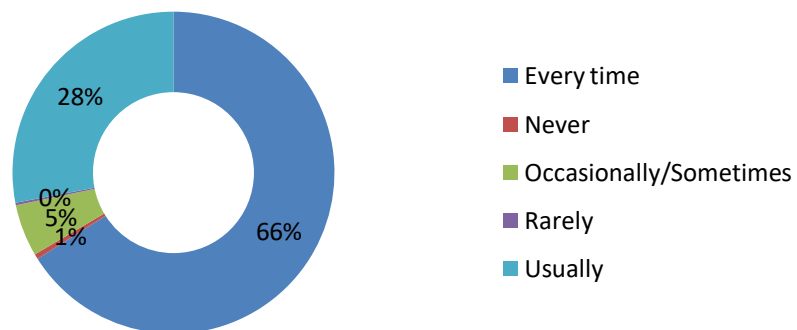
Q10 Fairness of the internal evaluation process by the teachers	
Always fair	64.85
Usually fair	25.42
Usually unfair	5.14
Sometimes unfair	4.33
Unfair	0.26

Q10 Fairness of the internal evaluation process by the teachers

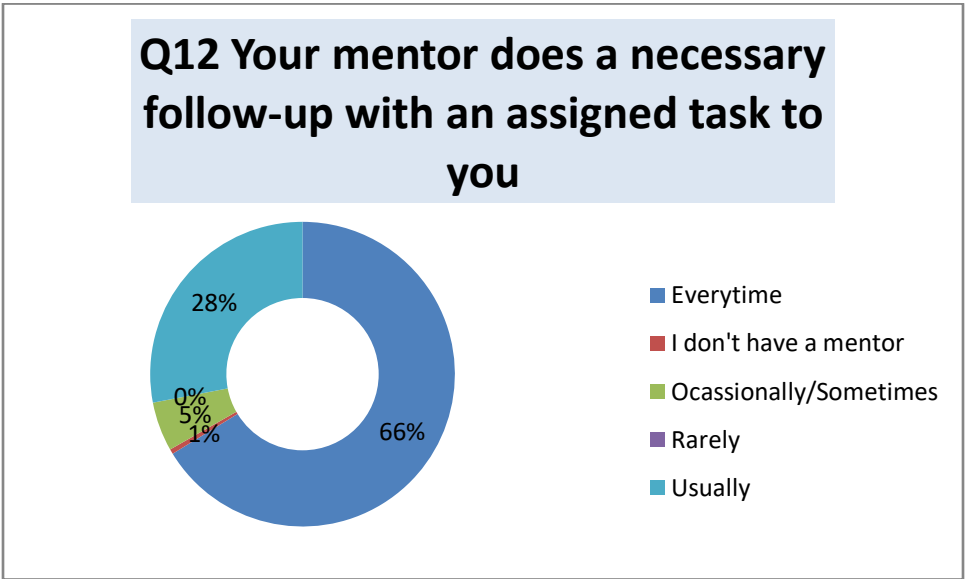


Q11 Was your performance in assignments discussed with you?	
Every time	66
Never	0.52
Occasionally/Sometimes	5.23
Rarely	0.25
Usually	28

Q11 Was your performance in assignments discussed with you?

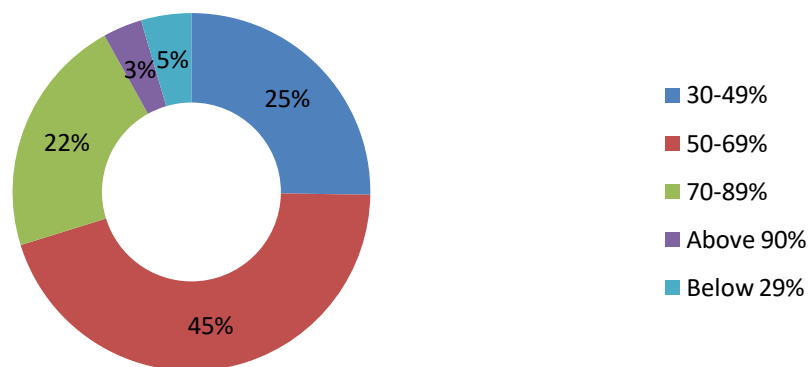


Q12 Your mentor does a necessary follow-up with an assigned task to you	
Every time	66.25
I don't have a mentor	0.52
Occasionally/Sometimes	5.23
Rarely	0
Usually	28



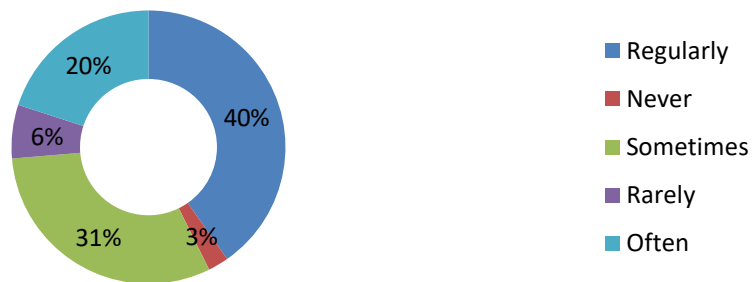
Q13 What percentage of teachers use ICT tools such as LCD projectors, Multimedia, etc. while teaching	
30-49%	25
50-69%	44.5
70-89%	21.5
Above 90%	3.5
Below 29%	4.5

Q13 What percentage of teachers use ICT tools such as LCD projectors, Multimedia, etc. while teaching



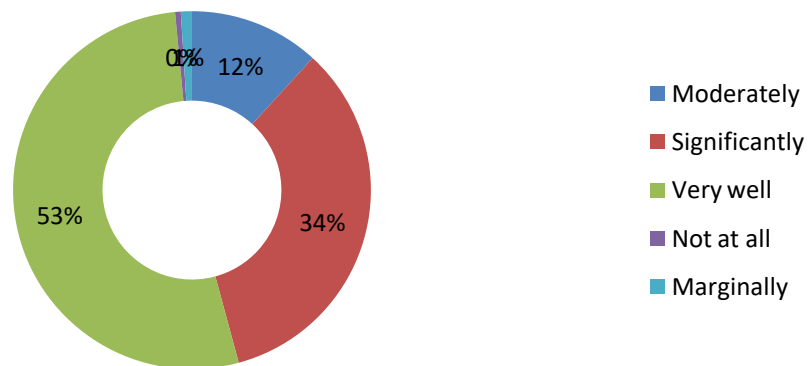
Q14 The institute takes an active interest in promoting internship, student exchange, field visit opportunities for students	
Regularly	40.24
Never	2.44
Sometimes	30.99
Rarely	6.32
Often	20.01

Q14 The institute takes an active interest in promoting internship, student exchange, field visit opportunities for students



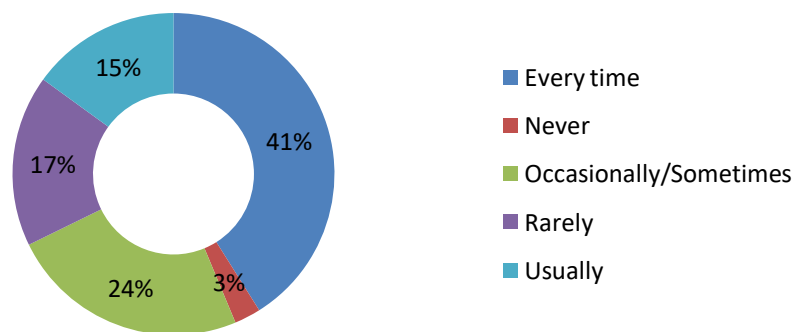
Q15 The teaching and mentoring process in your institution facilitates you in cognitive, social and emotional growth	
Moderately	11.79
Significantly	34
Very well	52.7
Not at all	0.51
Marginally	1

Q15 The teaching and mentoring process in your institution facilitates you in cognitive, social and emotional growth



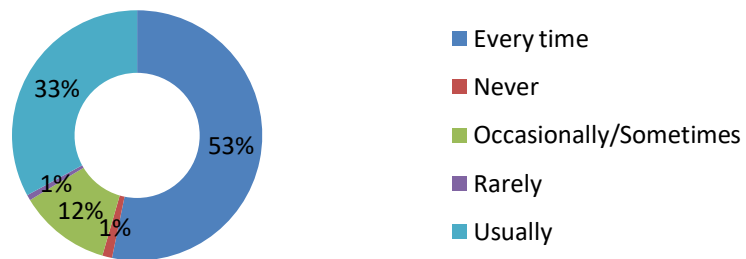
Q16 The institution provides multiple opportunities to learn and grow	
Every time	41.06
Never	2.65
Occasionally/Sometimes	24.05
Rarely	17.23
Usually	15.01

Q16 The institution provides multiple opportunities to learn and grow



Q17 The institution makes effort to engage students in the monitoring, review, and continuous quality improvement of the teaching learning process	
Every time	53.22
Never	1.26
Occasionally/Sometimes	11.87
Rarely	0.72
Usually	32.93

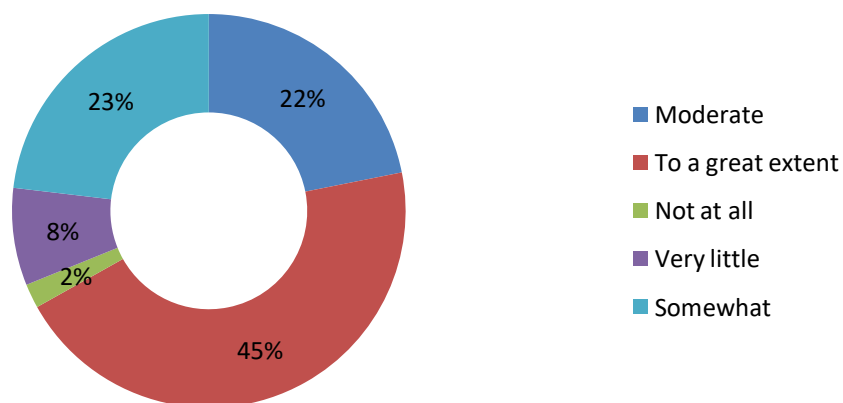
Q17 The institution makes effort to engage students in the monitoring, review, and continuous quality improvement of the teaching learning process



Q18 The institute/ teachers use student centric methods, such as experiential learning, participative learning, and problem-solving methodologies for enhancing learning experiences

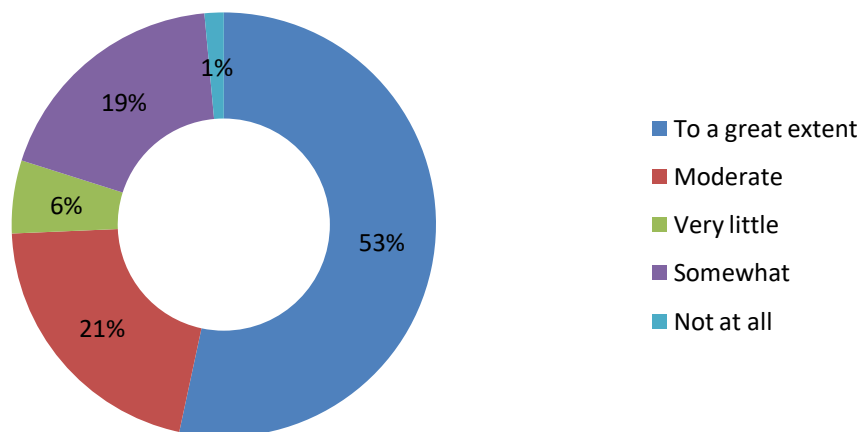
Moderate	21.87
To a great extent	45
Not at all	2
Very little	8
Somewhat	23.13

Q18 The institute/ teachers use student centric methods, such as experiential learning, participative learning, and problem-solving methodologies for enhancing learning experiences



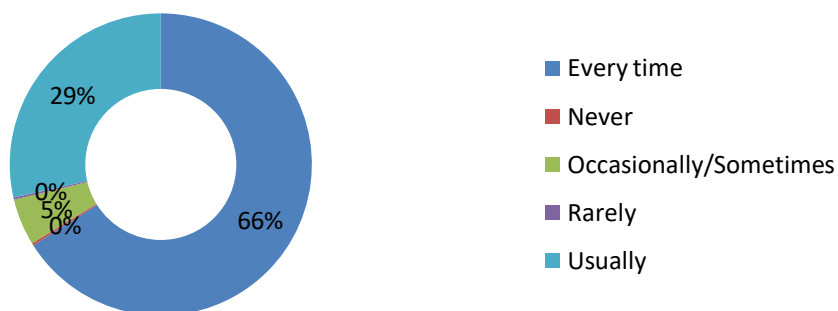
Q19 Efforts are made by the institute/ teachers to inculcate soft skills, life skills and employability skills to make you ready for the world of work	
To a great extent	53.37
Moderate	20.96
Very little	5.56
Somewhat	18.65
Not at all	1.46

Q19 Efforts are made by the institute/ teachers to inculcate soft skills, life skills and employability skills to make you ready for the world of work



Q20 The overall quality of teaching-learning process in your institute is very good	
Every time	66
Never	0.25
Occasionally/Sometimes	5
Rarely	0.23
Usually	28.52

Q20 The overall quality of teaching-learning process in your institute is very good

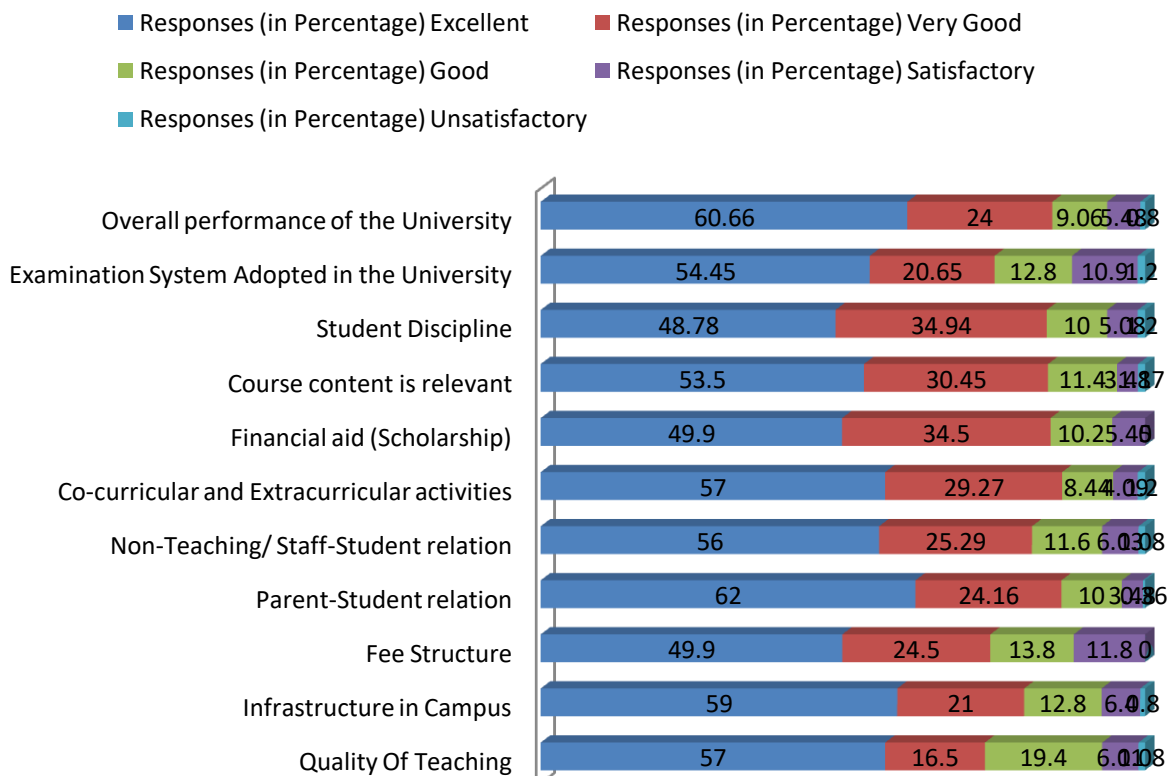


Analysis and graph of Parents feedback Session 2021-22

We have received the total feedback from the parents on the current content of the syllabus that was helped students' future.

<i>Parents feedback of Session (2021-22)</i>					
<i>Statement</i>	<i>Responses (in Percentage)</i>				
	Excellent	Very Good	Good	Satisfactory	Unsatisfactory
<i>Quality Of Teaching</i>	57	16.5	19.4	6.01	1.08
<i>Infrastructure in Campus</i>	59	21	12.8	6.4	0.8
<i>Fee Structure</i>	49.9	24.5	13.8	11.8	0
<i>Parent-Student relation</i>	62	24.16	10	3.48	0.36
<i>Non-Teaching/ Staff-Student relation</i>	56	25.29	11.6	6.03	1.08
<i>Co-curricular and Extracurricular activities</i>	57	29.27	8.44	4.09	1.2
<i>Financial aid (Scholarship)</i>	49.9	34.5	10.2	5.45	0
<i>Course content is relevant</i>	53.5	30.45	11.4	3.48	1.17
<i>Student Discipline</i>	48.78	34.94	10	5.08	1.2
<i>Examination System Adopted in the University</i>	54.45	20.65	12.8	10.9	1.2
<i>Overall performance of the University</i>	60.66	24	9.06	5.48	0.8

Parents feedback of Session (2021-22)

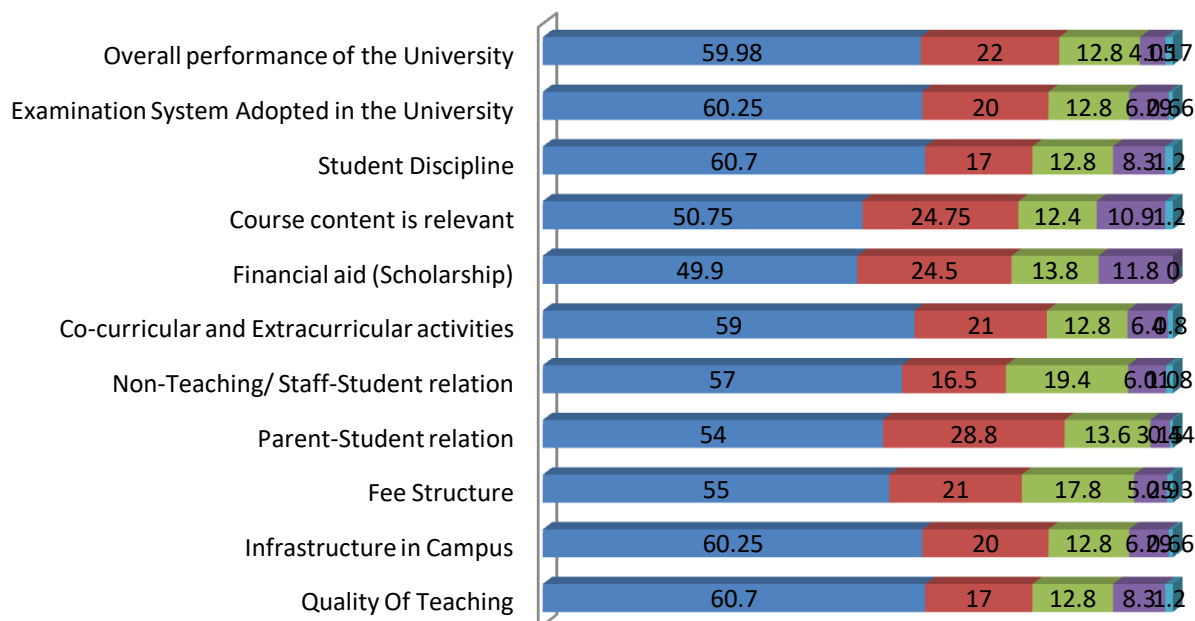


Parents feedback of Session (2020-21)

Statement	Responses (in Percentage)				
	Excellent	Very Good	Good	Satisfactory	Unsatisfactory
<i>Quality Of Teaching</i>	60.7	17	12.8	8.3	1.2
<i>Infrastructure in Campus</i>	60.25	20	12.8	6.29	0.66
<i>Fee Structure</i>	55	21	17.8	5.25	0.93
<i>Parent-Student relation</i>	54	28.8	13.6	3.15	0.44
<i>Non-Teaching/ Staff-Student relation</i>	57	16.5	19.4	6.01	1.08
<i>Co-curricular and Extracurricular activities</i>	59	21	12.8	6.4	0.8
<i>Financial aid (Scholarship)</i>	49.9	24.5	13.8	11.8	0
<i>Course content is relevant</i>	50.75	24.75	12.4	10.9	1.2
<i>Student Discipline</i>	60.7	17	12.8	8.3	1.2
<i>Examination System Adopted in the University</i>	60.25	20	12.8	6.29	0.66
<i>Overall performance of the University</i>	59.98	22	12.8	4.05	1.17

Parents feedback of Session (2020-21)

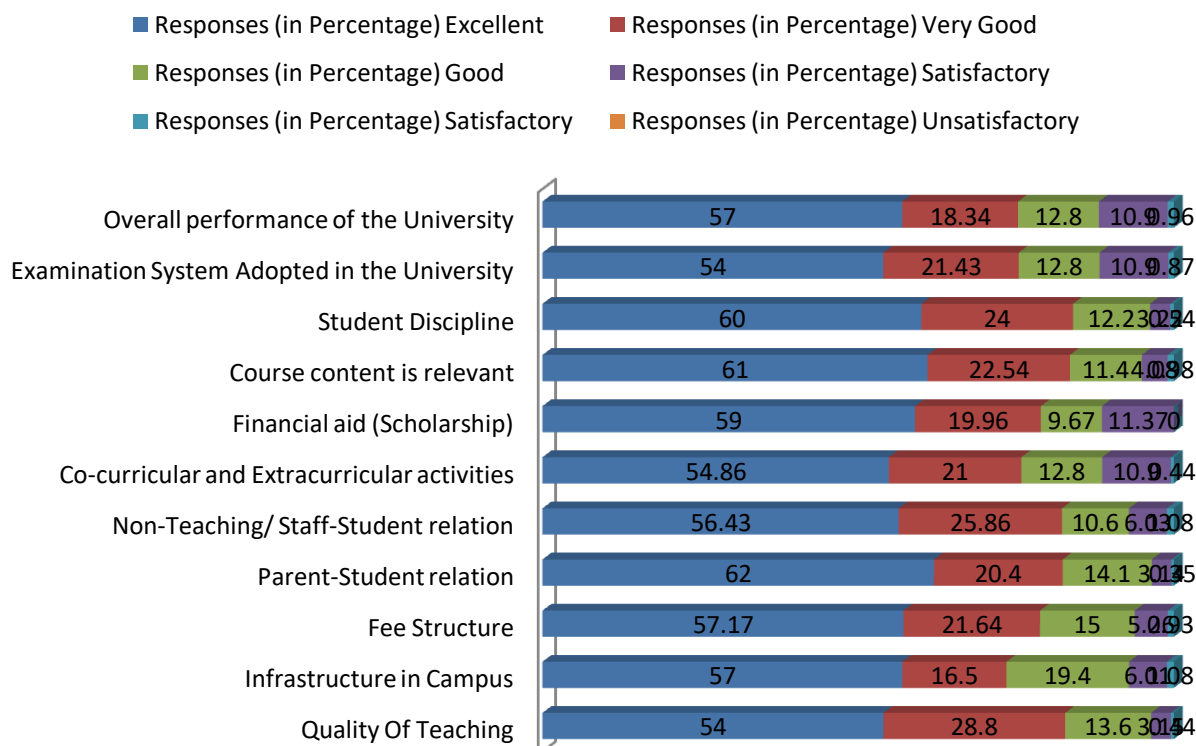
- Responses (in Percentage) Excellent ■ Responses (in Percentage) Very Good
- Responses (in Percentage) Good ■ Responses (in Percentage) Satisfactory
- Responses (in Percentage) Unsatisfactory



Parents feedback of Session (2019-20)

Statement	Responses (in Percentage)				
	Excellent	Very Good	Good	Satisfactory	Unsatisfactory
<i>Quality Of Teaching</i>	54	28.8	13.6	3.15	0.44
<i>Infrastructure in Campus</i>	57	16.5	19.4	6.01	1.08
<i>Fee Structure</i>	57.17	21.64	15	5.26	0.93
<i>Parent-Student relation</i>	62	20.4	14.1	3.14	0.35
<i>Non-Teaching/ Staff-Student relation</i>	56.43	25.86	10.6	6.03	1.08
<i>Co-curricular and Extracurricular activities</i>	54.86	21	12.8	10.9	0.44
<i>Financial aid (Scholarship)</i>	59	19.96	9.67	11.37	0
<i>Course content is relevant</i>	61	22.54	11.4	4.08	0.98
<i>Student Discipline</i>	60	24	12.2	3.22	0.54
<i>Examination System Adopted in the University</i>	54	21.43	12.8	10.9	0.87
<i>Overall performance of the University</i>	57	18.34	12.8	10.9	0.96

Parents feedback of Session (2019-20)

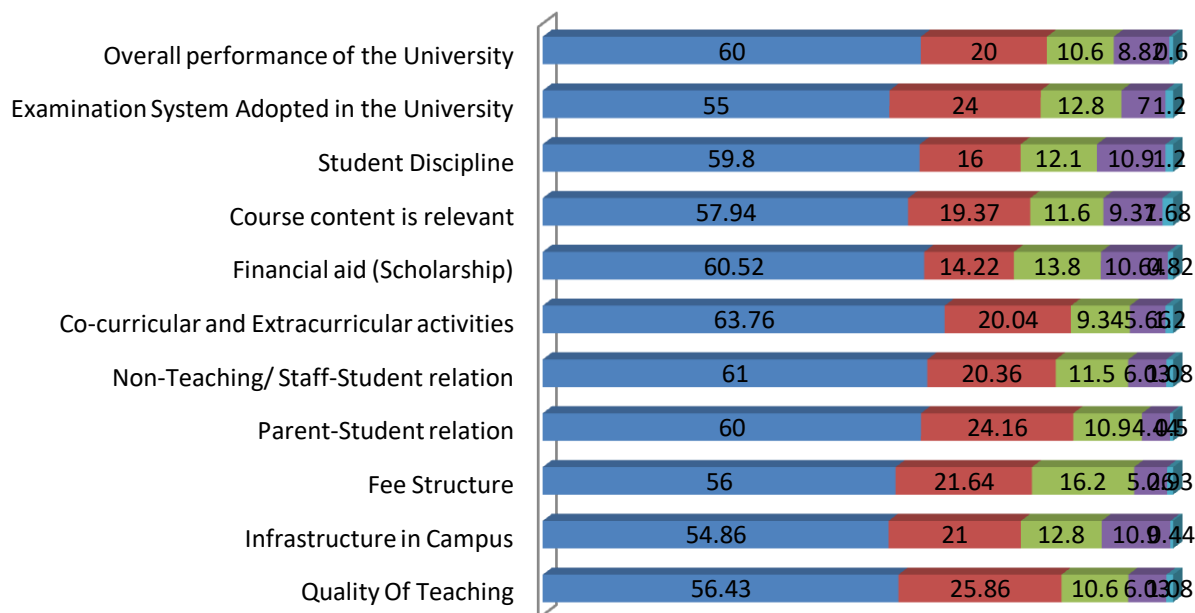


Parents feedback of Session (2018-19)

Statement	Responses (in Percentage)				
	Excellent	Very Good	Good	Satisfactory	Unsatisfactory
<i>Quality Of Teaching</i>	56.43	25.86	10.6	6.03	1.08
<i>Infrastructure in Campus</i>	54.86	21	12.8	10.9	0.44
<i>Fee Structure</i>	56	21.64	16.2	5.26	0.93
<i>Parent-Student relation</i>	60	24.16	10.9	4.44	0.5
<i>Non-Teaching/ Staff-Student relation</i>	61	20.36	11.5	6.03	1.08
<i>Co-curricular and Extracurricular activities</i>	63.76	20.04	9.34	5.66	1.2
<i>Financial aid (Scholarship)</i>	60.52	14.22	13.8	10.64	0.82
<i>Course content is relevant</i>	57.94	19.37	11.6	9.37	1.68
<i>Student Discipline</i>	59.8	16	12.1	10.9	1.2
<i>Examination System Adopted in the University</i>	55	24	12.8	7	1.2
<i>Overall performance of the University</i>	60	20	10.6	8.82	0.6

Parents feedback of Session (2018-19)

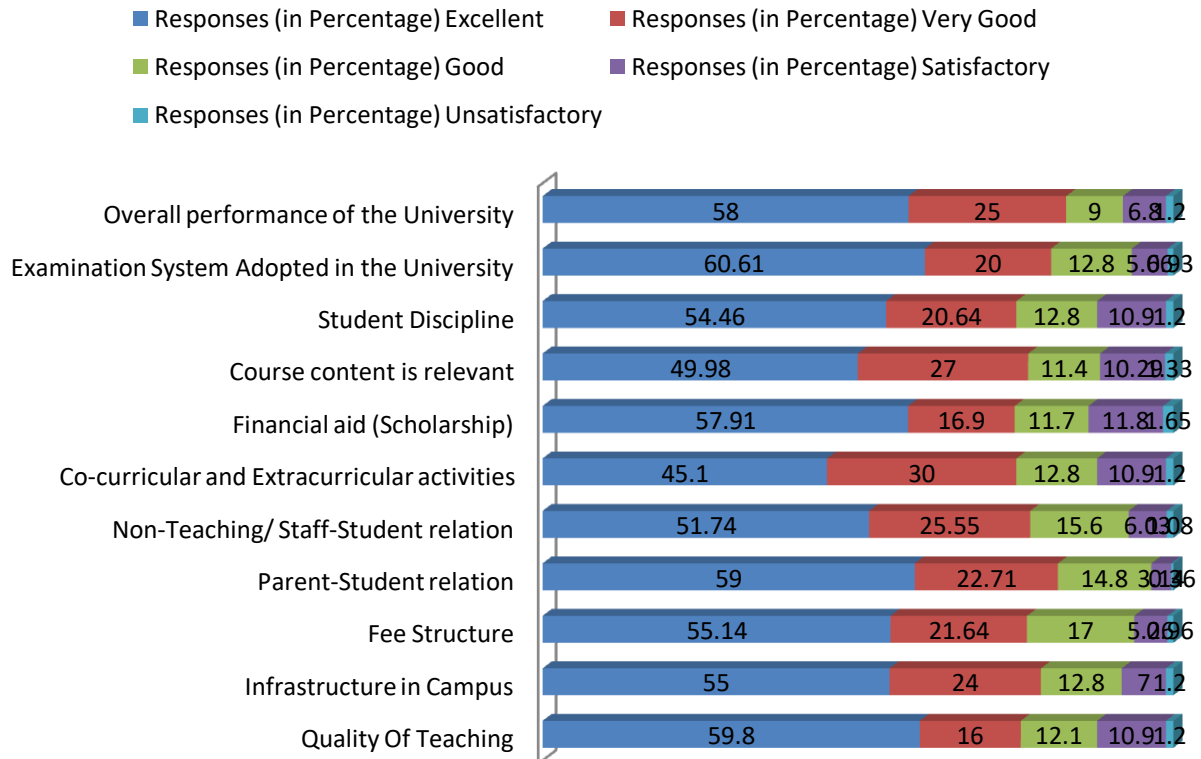
- Responses (in Percentage) Excellent
- Responses (in Percentage) Very Good
- Responses (in Percentage) Good
- Responses (in Percentage) Satisfactory
- Responses (in Percentage) Unsatisfactory



Parents feedback of Session (2017-18)

Statement	Responses (in Percentage)				
	Excellent	Very Good	Good	Satisfactory	Unsatisfactory
<i>Quality Of Teaching</i>	59.8	16	12.1	10.9	1.2
<i>Infrastructure in Campus</i>	55	24	12.8	7	1.2
<i>Fee Structure</i>	55.14	21.64	17	5.26	0.96
<i>Parent-Student relation</i>	59	22.71	14.8	3.14	0.36
<i>Non-Teaching/ Staff-Student relation</i>	51.74	25.55	15.6	6.03	1.08
<i>Co-curricular and Extracurricular activities</i>	45.1	30	12.8	10.9	1.2
<i>Financial aid (Scholarship)</i>	57.91	16.9	11.7	11.8	1.65
<i>Course content is relevant</i>	49.98	27	11.4	10.29	1.33
<i>Student Discipline</i>	54.46	20.64	12.8	10.9	1.2
<i>Examination System Adopted in the University</i>	60.61	20	12.8	5.66	0.93
<i>Overall performance of the University</i>	58	25	9	6.8	1.2

Parents feedback of Session (2017-18)

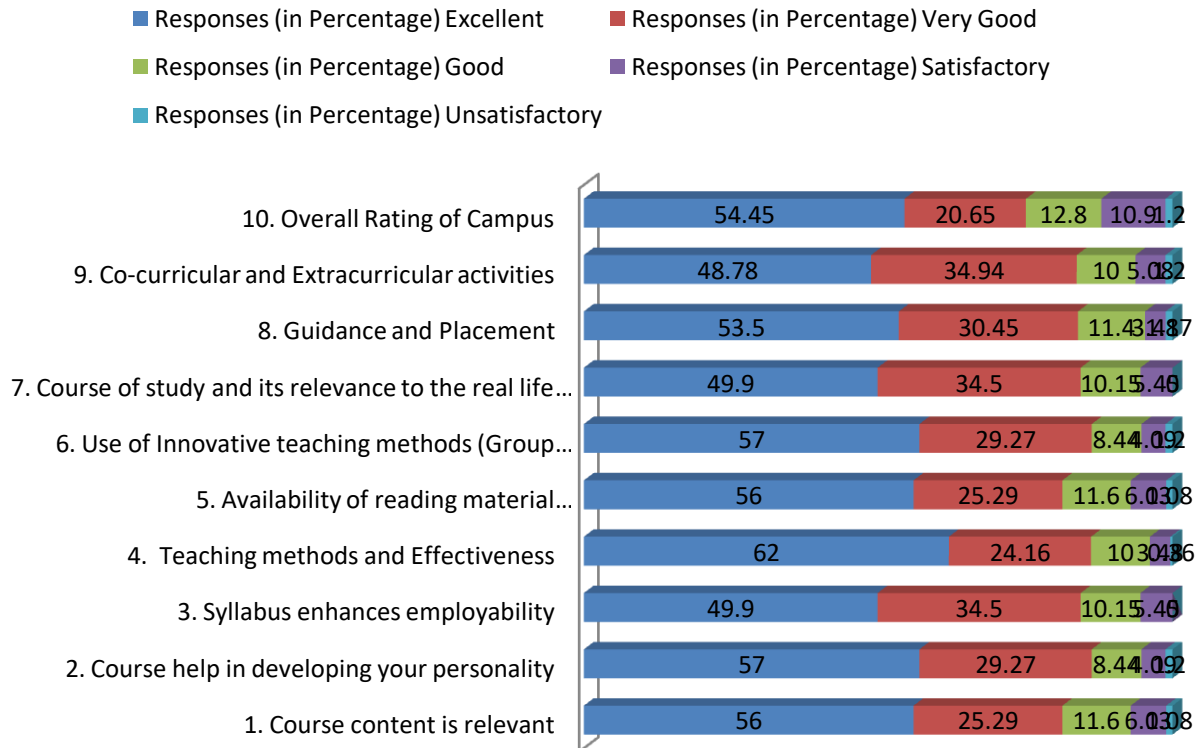


Analysis and Graph of Alumni Feedback (Session 2021-22 to 2017-18)

For alumni, it aimed for responses on adequateness of courses curriculum, sufficiency of syllabus content in context of current professional standards and curriculum design in context of development of self-directed learning and problem solving approach.

Alumni feedback of Session (2021-22)					
Statement	Responses (in Percentage)				
	Excellent	Very Good	Good	Satisfactory	Unsatisfactory
1. Course content is relevant	56	25.29	11.6	6.03	1.08
2. Course help in developing your personality	57	29.27	8.44	4.09	1.2
3. Syllabus enhances employability	49.9	34.5	10.15	5.45	0
4. Teaching methods and Effectiveness	62	24.16	10	3.48	0.36
5. Availability of reading material (Library/Internet/Others)	56	25.29	11.6	6.03	1.08
6. Use of Innovative teaching methods (Group discussion, language practice, Use of ICT & others)	57	29.27	8.44	4.09	1.2
7. Course of study and its relevance to the real life application	49.9	34.5	10.15	5.45	0
8. Guidance and Placement	53.5	30.45	11.4	3.48	1.17
9. Co-curricular and Extracurricular activities	48.78	34.94	10	5.08	1.2
10. Overall Rating of Campus	54.45	20.65	12.8	10.9	1.2

Alumni feedback of Session (2021-22)

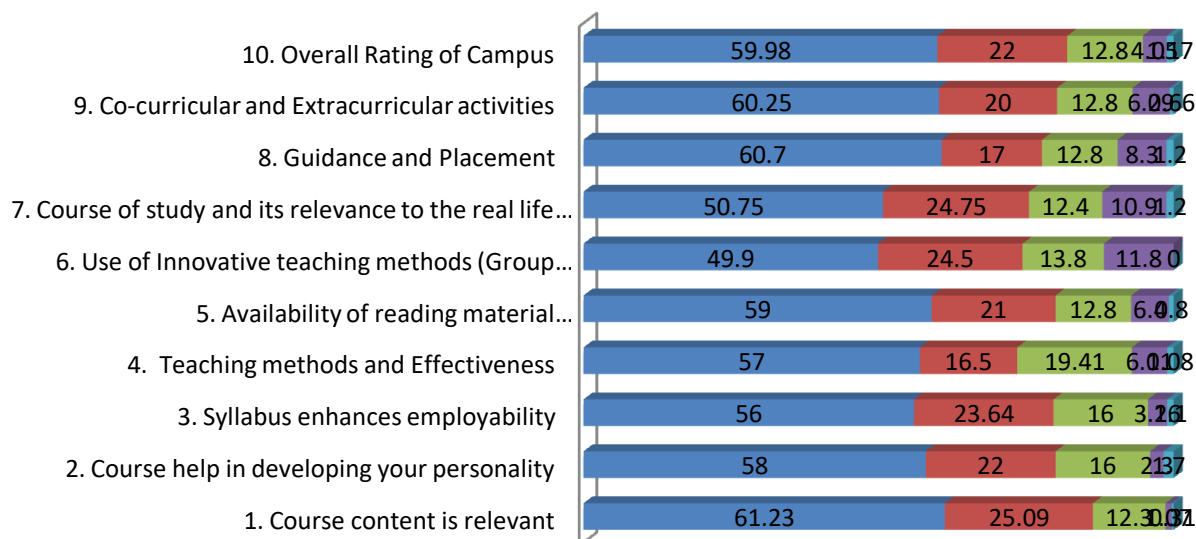


Alumni feedback of Session (2020-21)

Statement	Responses (in Percentage)				
	Excellent	Very Good	Good	Satisfactory	Unsatisfactory
1. Course content is relevant	61.23	25.09	12.3	1.07	0.31
2. Course help in developing your personality	58	22	16	2.3	1.7
3. Syllabus enhances employability	56	23.64	16	3.26	1.1
4. Teaching methods and Effectiveness	57	16.5	19.41	6.01	1.08
5. Availability of reading material (Library/Internet/Others)	59	21	12.8	6.4	0.8
6. Use of Innovative teaching methods (Group discussion, language practice, Use of ICT & others)	49.9	24.5	13.8	11.8	0
7. Course of study and its relevance to the real life application	50.75	24.75	12.4	10.9	1.2
8. Guidance and Placement	60.7	17	12.8	8.3	1.2
9. Co-curricular and Extracurricular activities	60.25	20	12.8	6.29	0.66
10. Overall Rating of Campus	59.98	22	12.8	4.05	1.17

Alumni feedback of Session (2020-21)

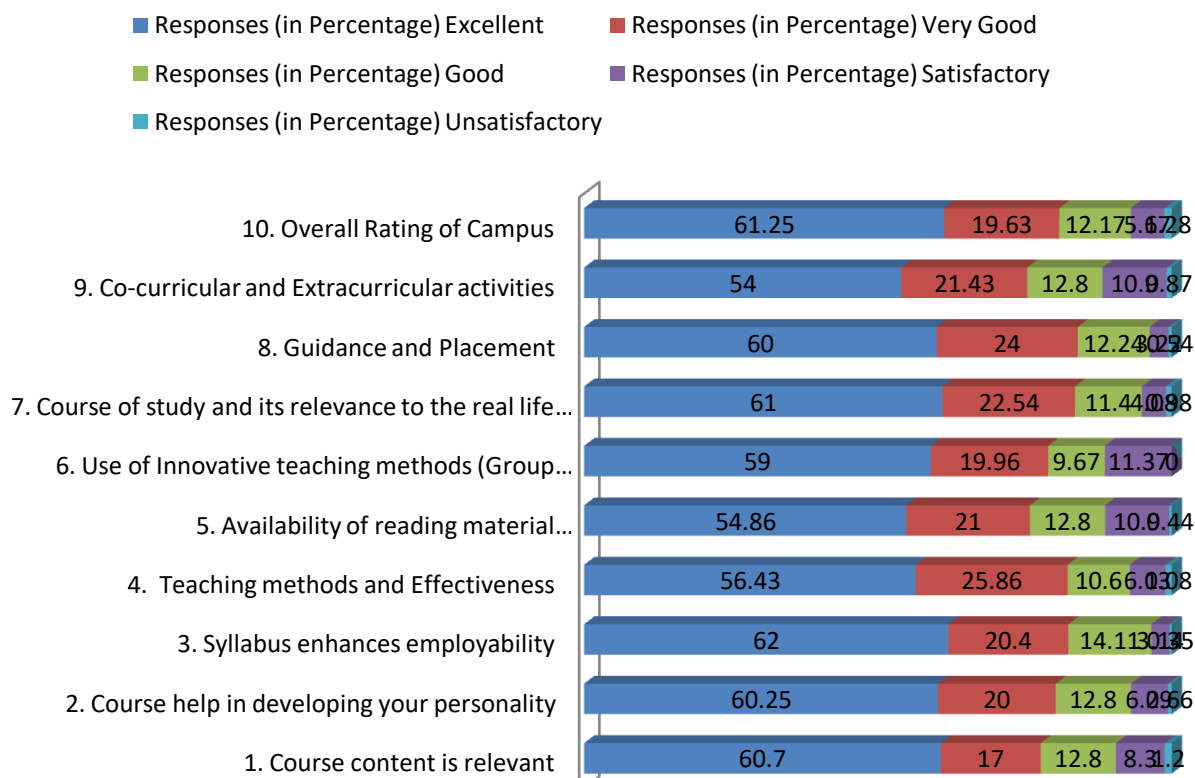
■ Responses (in Percentage) Excellent ■ Responses (in Percentage) Very Good
■ Responses (in Percentage) Good ■ Responses (in Percentage) Satisfactory
■ Responses (in Percentage) Unsatisfactory



Alumni feedback of Session (2019-20)

Statement	Responses (in Percentage)				
	Excellent	Very Good	Good	Satisfactory	Unsatisfactory
1. Course content is relevant	60.7	17	12.8	8.3	1.2
2. Course help in developing your personality	60.25	20	12.8	6.29	0.66
3. Syllabus enhances employability	62	20.4	14.11	3.14	0.35
4. Teaching methods and Effectiveness	56.43	25.86	10.6	6.03	1.08
5. Availability of reading material (Library/Internet/Others)	54.86	21	12.8	10.9	0.44
6. Use of Innovative teaching methods (Group discussion, language practice, Use of ICT & others)	59	19.96	9.67	11.37	0
7. Course of study and its relevance to the real life application	61	22.54	11.4	4.08	0.98
8. Guidance and Placement	60	24	12.24	3.22	0.54
9. Co-curricular and Extracurricular activities	54	21.43	12.8	10.9	0.87
10. Overall Rating of Campus	61.25	19.63	12.17	5.67	1.28

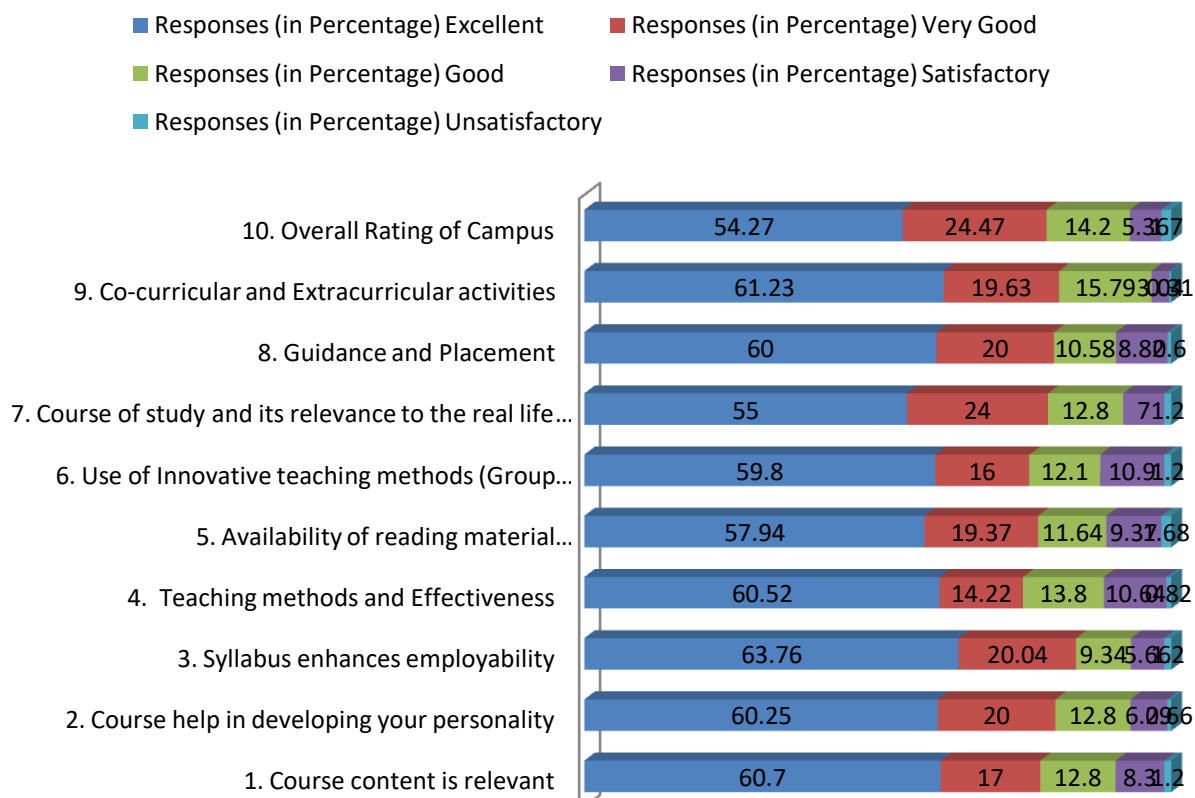
Alumni feedback of Session (2019-20)



Alumni feedback of Session (2018-19)

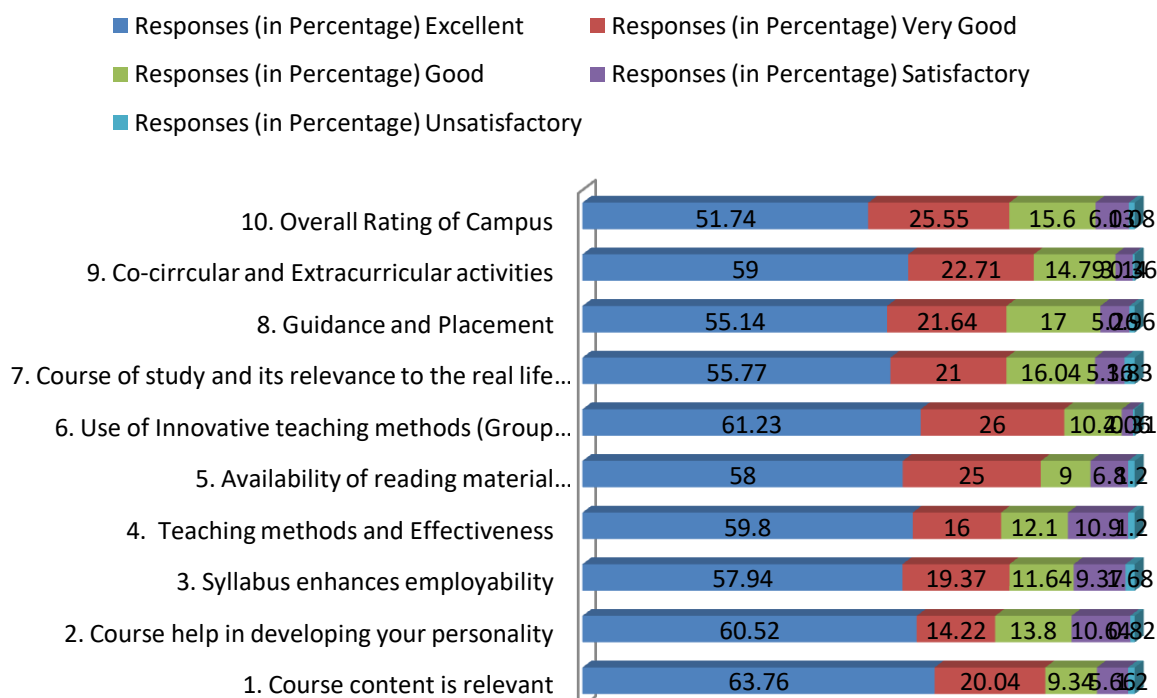
Statement	Responses (in Percentage)				
	Excellent	Very Good	Good	Satisfactory	Unsatisfactory
1. Course content is relevant	60.7	17	12.8	8.3	1.2
2. Course help in developing your personality	60.25	20	12.8	6.29	0.66
3. Syllabus enhances employability	63.76	20.04	9.34	5.66	1.2
4. Teaching methods and Effectiveness	60.52	14.22	13.8	10.64	0.82
5. Availability of reading material (Library/Internet/Others)	57.94	19.37	11.64	9.37	1.68
6. Use of Innovative teaching methods (Group discussion, language practice, Use of ICT & others)	59.8	16	12.1	10.9	1.2
7. Course of study and its relevance to the real life application	55	24	12.8	7	1.2
8. Guidance and Placement	60	20	10.58	8.82	0.6
9. Co-curricular and Extracurricular activities	61.23	19.63	15.79	3.04	0.31
10. Overall Rating of Campus	54.27	24.47	14.2	5.36	1.7

Alumni feedback of Session (2018-19)



Alumni feedback of Session (2017-18)					
Statement	Responses (in Percentage)				
	Excellent	Very Good	Good	Satisfactory	Unsatisfactory
1. Course content is relevant	63.76	20.04	9.34	5.66	1.2
2. Course help in developing your personality	60.52	14.22	13.8	10.64	0.82
3. Syllabus enhances employability	57.94	19.37	11.64	9.37	1.68
4. Teaching methods and Effectiveness	59.8	16	12.1	10.9	1.2
5. Availability of reading material (Library/Internet/Others)	58	25	9	6.8	1.2
6. Use of Innovative teaching methods (Group discussion, language practice, Use of ICT & others)	61.23	26	10.4	2.06	0.31
7. Course of study and its relevance to the real life application	55.77	21	16.04	5.36	1.83
8. Guidance and Placement	55.14	21.64	17	5.26	0.96
9. Co-circular and Extracurricular activities	59	22.71	14.79	3.14	0.36
10. Overall Rating of Campus	51.74	25.55	15.6	6.03	1.08

Alumni feedback of Session (2017-18)

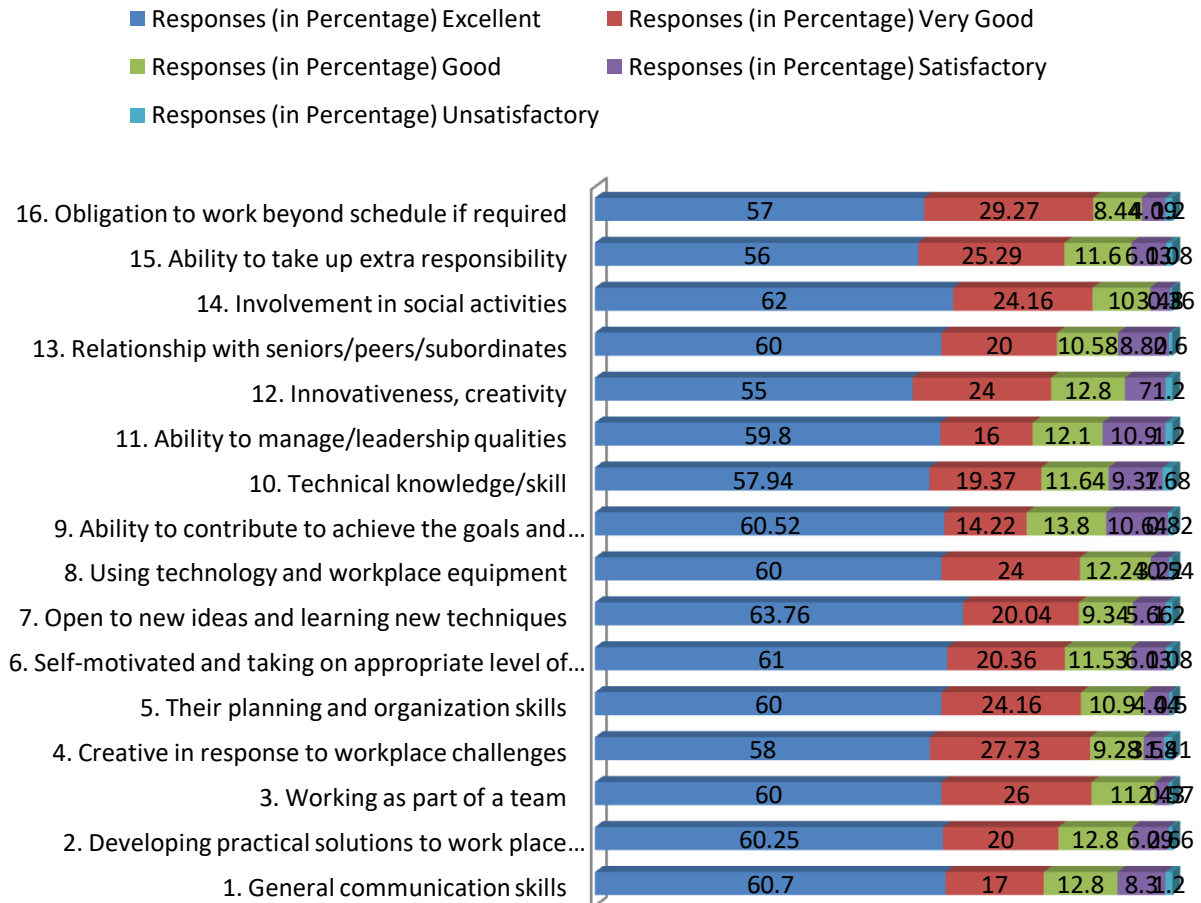


Analysis and Graph of Employers Feedback (Session 2021-22 to 2017-18)

For employers, it addressed issues like general communication skills, developing solutions to real life problems, working in a team, creative challenges to challenges, organization skills, learning of new techniques, integration of technology for work as learnt through the curriculum.

Employer feedback of Session (2021-22)					
Statement	Responses (in Percentage)				
	Excellent	Very Good	Good	Satisfactory	Unsatisfactory
1. General communication skills	60.7	17	12.8	8.3	1.2
2. Developing practical solutions to work place problems	60.25	20	12.8	6.29	0.66
3. Working as part of a team	60	26	11	2.43	0.57
4. Creative in response to workplace challenges	58	27.73	9.28	3.58	1.41
5. Their planning and organization skills	60	24.16	10.9	4.44	0.5
6. Self-motivated and taking on appropriate level of responsibility	61	20.36	11.53	6.03	1.08
7. Open to new ideas and learning new techniques	63.76	20.04	9.34	5.66	1.2
8. Using technology and workplace equipment	60	24	12.24	3.22	0.54
9. Ability to contribute to achieve the goals and objectives of the institution	60.52	14.22	13.8	10.64	0.82
10. Technical knowledge/skill	57.94	19.37	11.64	9.37	1.68
11. Ability to manage/leadership qualities	59.8	16	12.1	10.9	1.2
12. Innovativeness, creativity	55	24	12.8	7	1.2
13. Relationship with seniors/peers/subordinates	60	20	10.58	8.82	0.6
14. Involvement in social activities	62	24.16	10	3.48	0.36
15. Ability to take up extra responsibility	56	25.29	11.6	6.03	1.08
16. Obligation to work beyond schedule if required	57	29.27	8.44	4.09	1.2

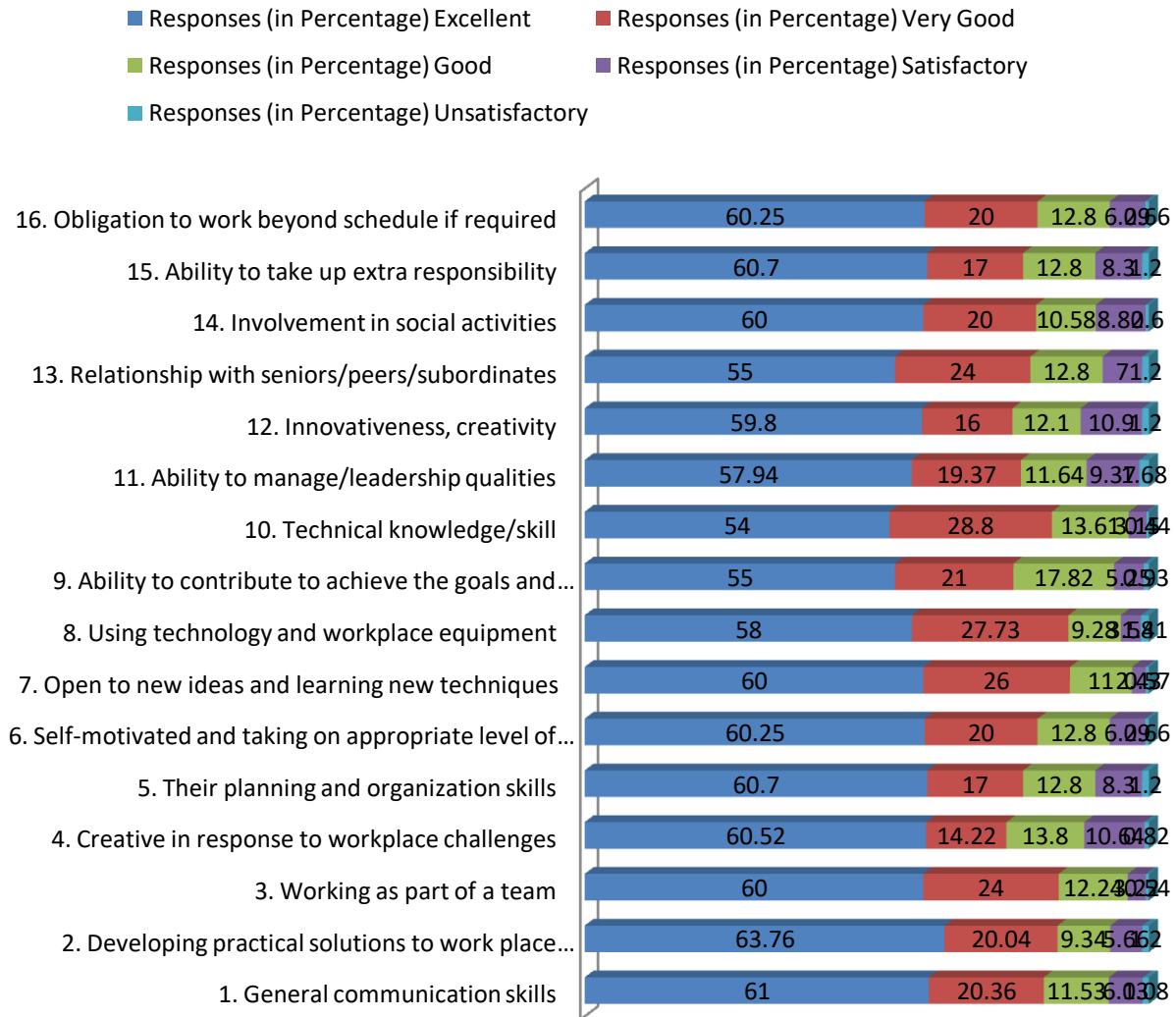
Employer feedback of Session (2021-22)



Employer feedback of Session (2020-21)

Statement	Responses (in Percentage)				
	Excellent	Very Good	Good	Satisfactory	Unsatisfactory
1. General communication skills	61	20.36	11.53	6.03	1.08
2. Developing practical solutions to work place problems	63.76	20.04	9.34	5.66	1.2
3. Working as part of a team	60	24	12.24	3.22	0.54
4. Creative in response to workplace challenges	60.52	14.22	13.8	10.64	0.82
5. Their planning and organization skills	60.7	17	12.8	8.3	1.2
6. Self-motivated and taking on appropriate level of responsibility	60.25	20	12.8	6.29	0.66
7. Open to new ideas and learning new techniques	60	26	11	2.43	0.57
8. Using technology and workplace equipment	58	27.73	9.28	3.58	1.41
9. Ability to contribute to achieve the goals and objectives of the institution	55	21	17.82	5.25	0.93
10. Technical knowledge/skill	54	28.8	13.61	3.15	0.44
11. Ability to manage/leadership qualities	57.94	19.37	11.64	9.37	1.68
12. Innovativeness, creativity	59.8	16	12.1	10.9	1.2
13. Relationship with seniors/peers/subordinates	55	24	12.8	7	1.2
14. Involvement in social activities	60	20	10.58	8.82	0.6
15. Ability to take up extra responsibility	60.7	17	12.8	8.3	1.2
16. Obligation to work beyond schedule if required	60.25	20	12.8	6.29	0.66

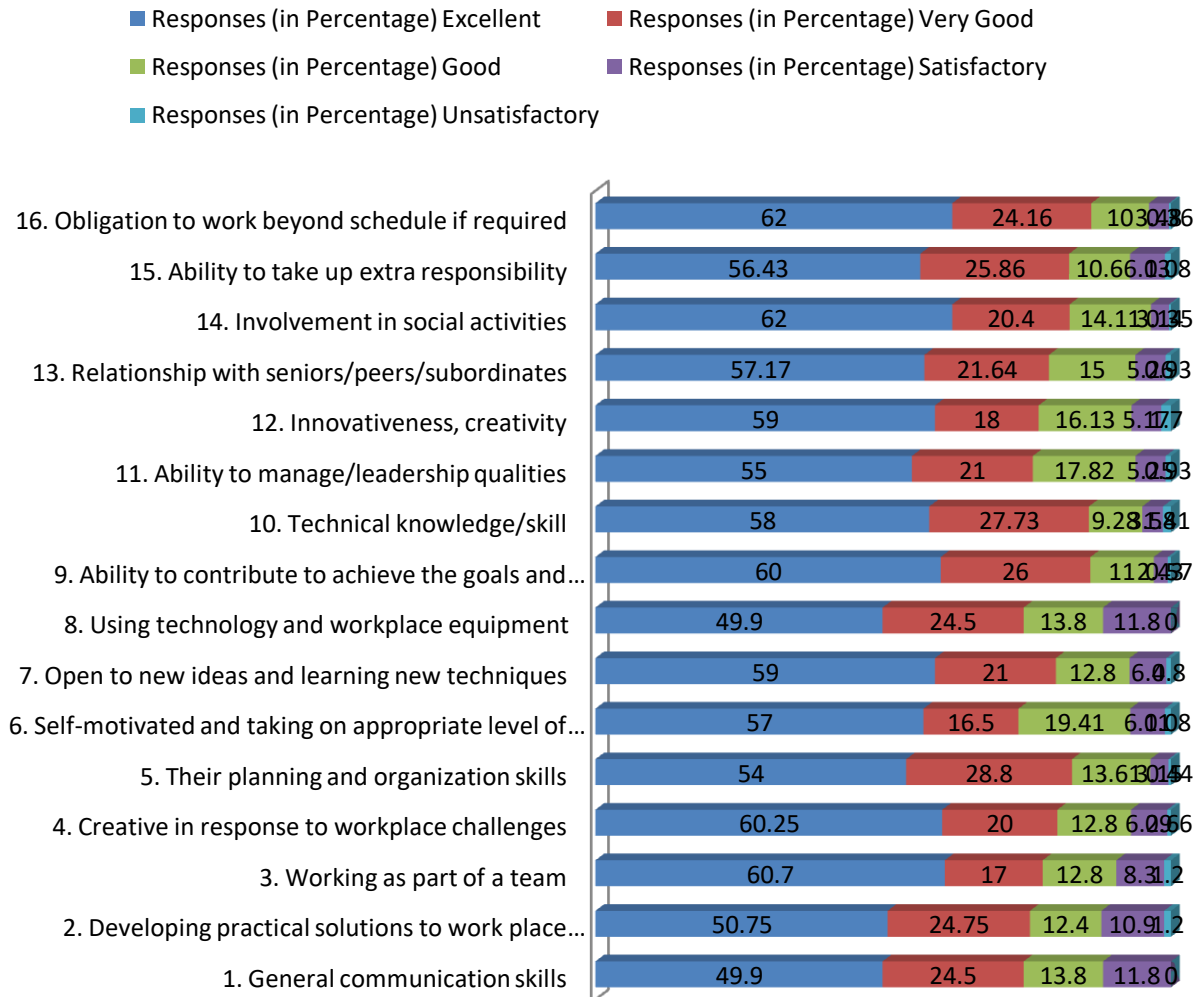
Employer feedback of Session (2020-21)



Employer feedback of Session (2019-20)

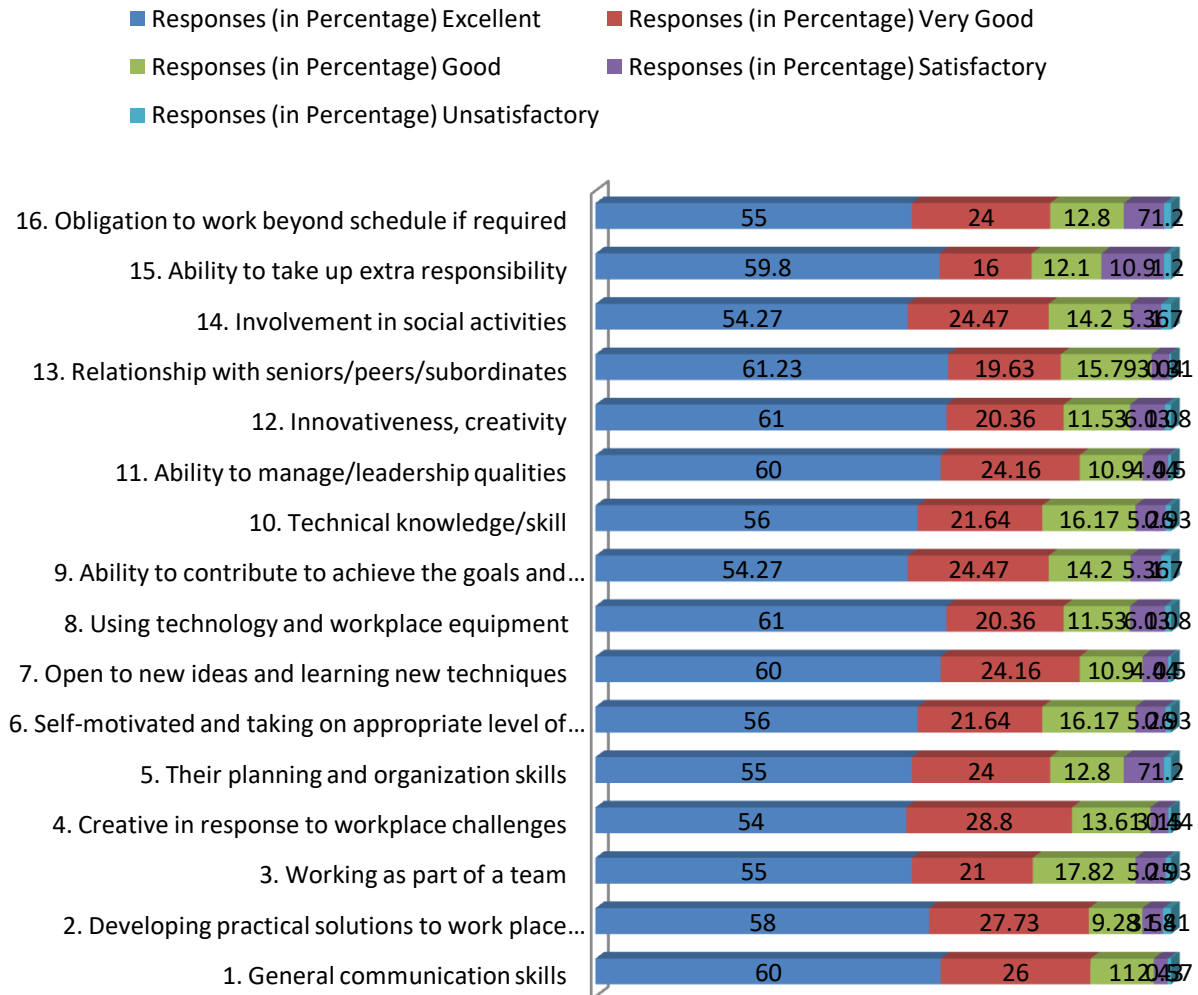
Statement	Responses (in Percentage)				
	Excellent	Very Good	Good	Satisfactory	Unsatisfactory
1. General communication skills	49.9	24.5	13.8	11.8	0
2. Developing practical solutions to work place problems	50.75	24.75	12.4	10.9	1.2
3. Working as part of a team	60.7	17	12.8	8.3	1.2
4. Creative in response to workplace challenges	60.25	20	12.8	6.29	0.66
5. Their planning and organization skills	54	28.8	13.61	3.15	0.44
6. Self-motivated and taking on appropriate level of responsibility	57	16.5	19.41	6.01	1.08
7. Open to new ideas and learning new techniques	59	21	12.8	6.4	0.8
8. Using technology and workplace equipment	49.9	24.5	13.8	11.8	0
9. Ability to contribute to achieve the goals and objectives of the institution	60	26	11	2.43	0.57
10. Technical knowledge/skill	58	27.73	9.28	3.58	1.41
11. Ability to manage/leadership qualities	55	21	17.82	5.25	0.93
12. Innovativeness, creativity	59	18	16.13	5.17	1.7
13. Relationship with seniors/peers/subordinates	57.17	21.64	15	5.26	0.93
14. Involvement in social activities	62	20.4	14.11	3.14	0.35
15. Ability to take up extra responsibility	56.43	25.86	10.6	6.03	1.08
16. Obligation to work beyond schedule if required	62	24.16	10	3.48	0.36

Employer feedback of Session (2019-20)



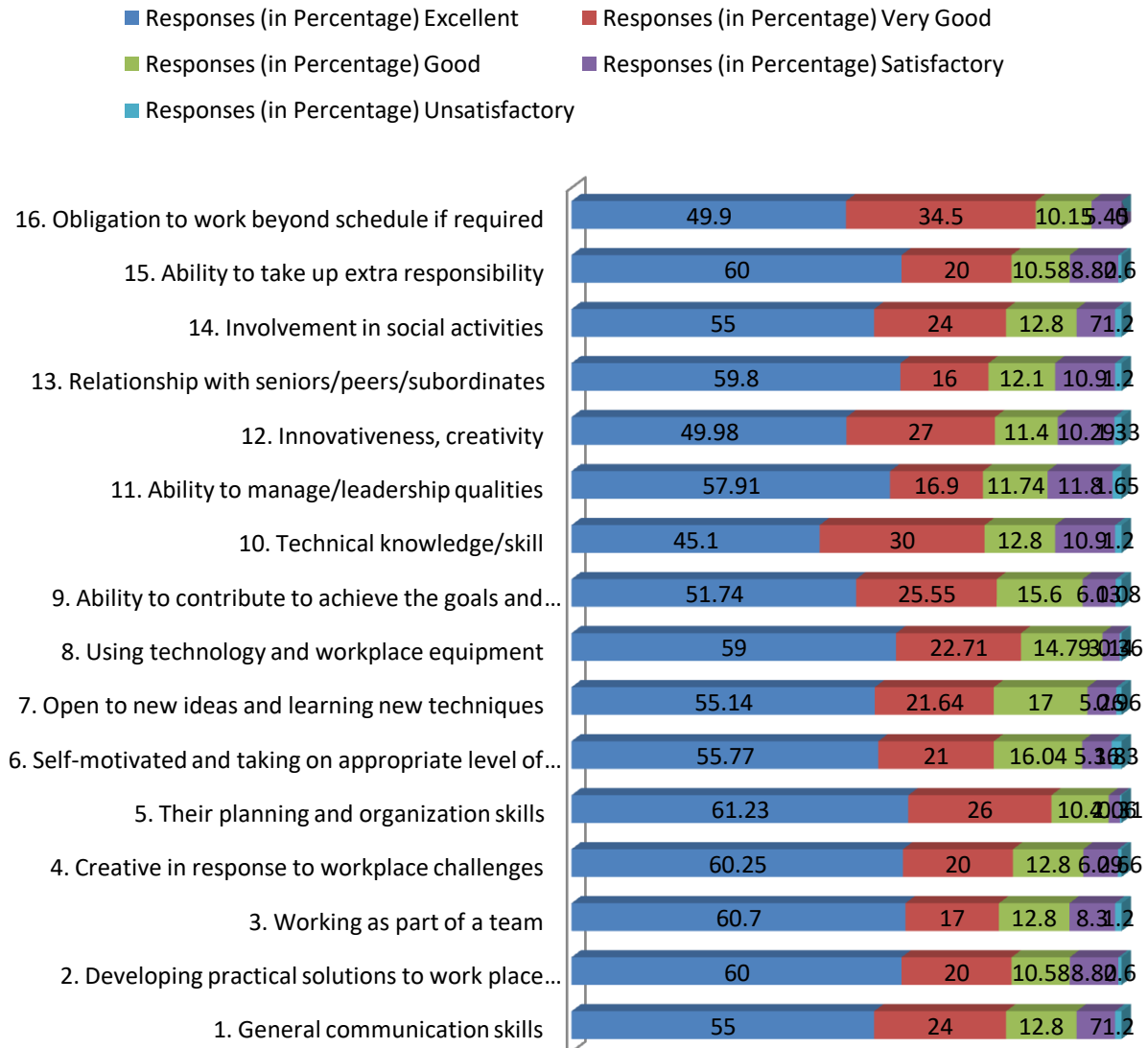
Employer feedback of Session (2018-19)					
Statement	Responses (in Percentage)				
	Excellent	Very Good	Good	Satisfactory	Unsatisfactory
1. General communication skills	60	26	11	2.43	0.57
2. Developing practical solutions to work place problems	58	27.73	9.28	3.58	1.41
3. Working as part of a team	55	21	17.82	5.25	0.93
4. Creative in response to workplace challenges	54	28.8	13.61	3.15	0.44
5. Their planning and organization skills	55	24	12.8	7	1.2
6. Self-motivated and taking on appropriate level of responsibility	56	21.64	16.17	5.26	0.93
7. Open to new ideas and learning new techniques	60	24.16	10.9	4.44	0.5
8. Using technology and workplace equipment	61	20.36	11.53	6.03	1.08
9. Ability to contribute to achieve the goals and objectives of the institution	54.27	24.47	14.2	5.36	1.7
10. Technical knowledge/skill	56	21.64	16.17	5.26	0.93
11. Ability to manage/leadership qualities	60	24.16	10.9	4.44	0.5
12. Innovativeness, creativity	61	20.36	11.53	6.03	1.08
13. Relationship with seniors/peers/subordinates	61.23	19.63	15.79	3.04	0.31
14. Involvement in social activities	54.27	24.47	14.2	5.36	1.7
15. Ability to take up extra responsibility	59.8	16	12.1	10.9	1.2
16. Obligation to work beyond schedule if required	55	24	12.8	7	1.2

Employer feedback of Session (2018-19)



Employer feedback of Session (2017-18)					
Statement	Responses (in Percentage)				
	Excellent	Very Good	Good	Satisfactory	Unsatisfactory
1. General communication skills	55	24	12.8	7	1.2
2. Developing practical solutions to work place problems	60	20	10.58	8.82	0.6
3. Working as part of a team	60.7	17	12.8	8.3	1.2
4. Creative in response to workplace challenges	60.25	20	12.8	6.29	0.66
5. Their planning and organization skills	61.23	26	10.4	2.06	0.31
6. Self-motivated and taking on appropriate level of responsibility	55.77	21	16.04	5.36	1.83
7. Open to new ideas and learning new techniques	55.14	21.64	17	5.26	0.96
8. Using technology and workplace equipment	59	22.71	14.79	3.14	0.36
9. Ability to contribute to achieve the goals and objectives of the institution	51.74	25.55	15.6	6.03	1.08
10. Technical knowledge/skill	45.1	30	12.8	10.9	1.2
11. Ability to manage/leadership qualities	57.91	16.9	11.74	11.8	1.65
12. Innovativeness, creativity	49.98	27	11.4	10.29	1.33
13. Relationship with seniors/peers/subordinates	59.8	16	12.1	10.9	1.2
14. Involvement in social activities	55	24	12.8	7	1.2
15. Ability to take up extra responsibility	60	20	10.58	8.82	0.6
16. Obligation to work beyond schedule if required	49.9	34.5	10.15	5.45	0

Employer feedback of Session (2017-18)



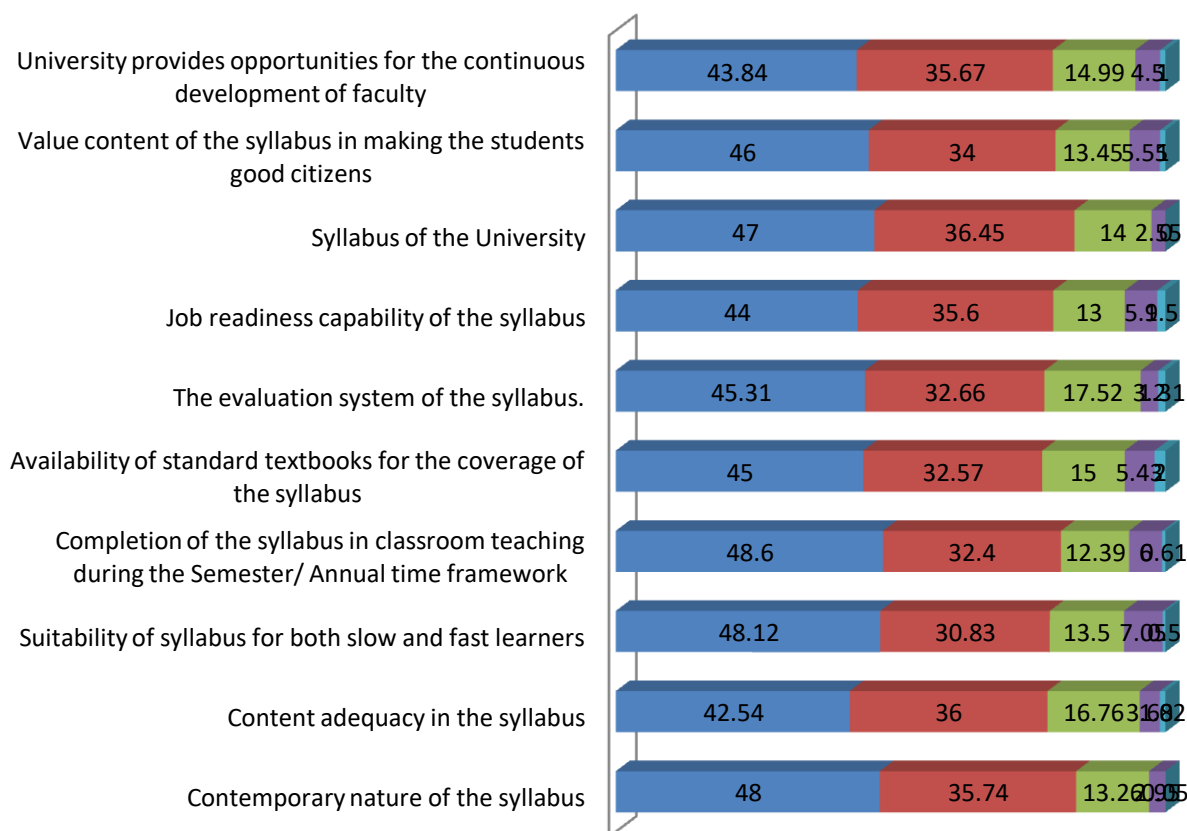
Teacher's feedback of Session (2021-22)

For teachers, the feedback addressed issues like suitability the course and its need base, outcomes of the curriculum, relationship with course content and corresponding reference material, availability of reference materials in terms with curriculum, evaluation methods and curriculum delivery, etc.

	Excellent / उत्कृष्ट	Very Good/ बहुत अच्छा	Good/ उत्तम	Satisfactory/ संतुष्ट	Unsatisfactory / असंतुष्ट
2021-22					
Contemporary nature of the syllabus	48	35.74	13.26	2.95	0.05
Content adequacy in the syllabus	42.54	36	16.76	3.68	1.02
Suitability of syllabus for both slow and fast learners	48.12	30.83	13.5	7.05	0.5
Completion of the syllabus in classroom teaching during the Semester/ Annual time framework	48.6	32.4	12.39	6	0.61
Availability of standard textbooks for the coverage of the syllabus	45	32.57	15	5.43	2
The evaluation system of the syllabus.	45.31	32.66	17.52	3.2	1.31
Job readiness capability of the syllabus	44	35.6	13	5.9	1.5
Syllabus of the University	47	36.45	14	2.55	0
Value content of the syllabus in making the students good citizens	46	34	13.45	5.55	1
University provides opportunities for the continuous development of faculty	43.84	35.67	14.99	4.5	1

Teachers feedback of Session (2021-22)

■ Excellent / उत्कृष्ट ■ Very Good/ बहुत अच्छा ■ Good/ उत्तम
■ Satisfactory/ संतुष्ट ■ Unsatisfactory / असंतुष्ट

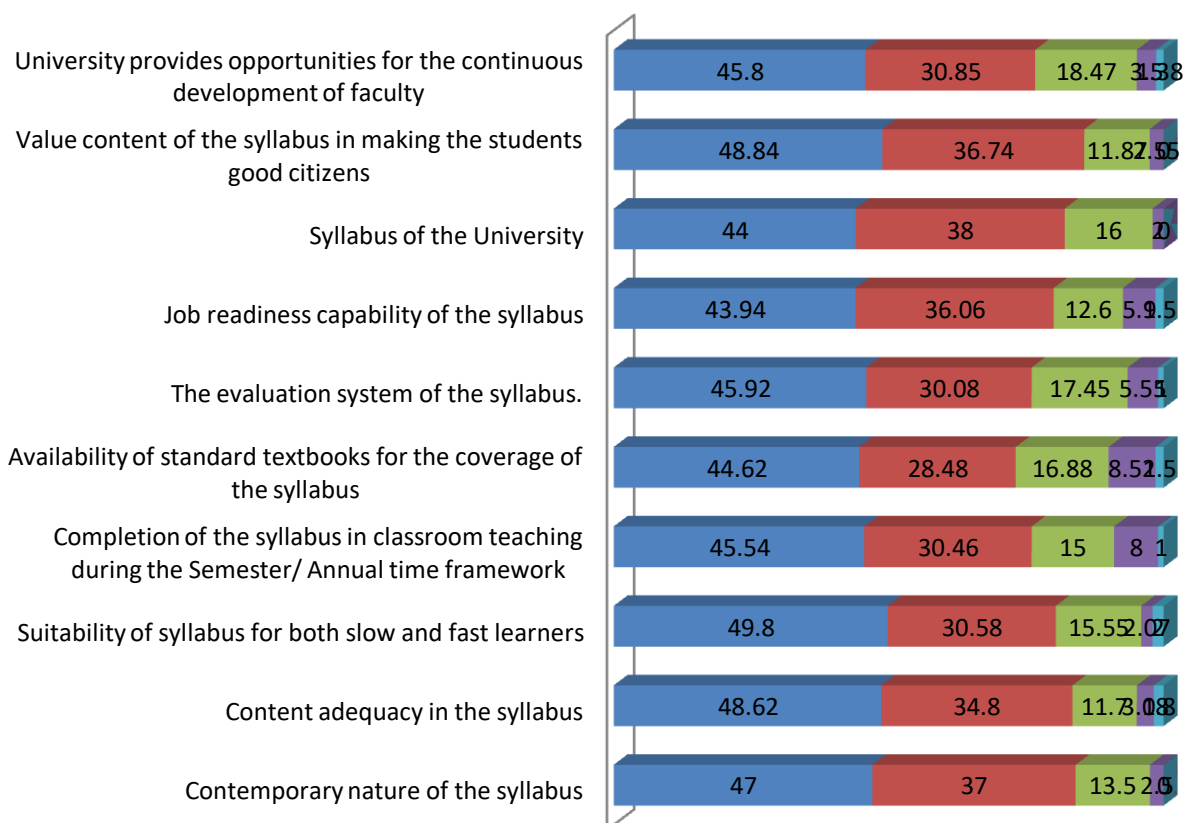


Teachers feedback of Session (2020-21)

	Excellent / उत्कृष्ट	Very Good/ बहुत अच्छा	Good/ उत्तम	Satisfactory/ संतुष्ट	Unsatisfactory / असंतुष्ट
2020-21					
Contemporary nature of the syllabus	47	37	13.5	2.5	0
Content adequacy in the syllabus	48.62	34.8	11.7	3.08	1.8
Suitability of syllabus for both slow and fast learners	49.8	30.58	15.55	2.07	2
Completion of the syllabus in classroom teaching during the Semester/ Annual time framework	45.54	30.46	15	8	1
Availability of standard textbooks for the coverage of the syllabus	44.62	28.48	16.88	8.52	1.5
The evaluation system of the syllabus.	45.92	30.08	17.45	5.55	1
Job readiness capability of the syllabus	43.94	36.06	12.6	5.9	1.5
Syllabus of the University	44	38	16	2	0
Value content of the syllabus in making the students good citizens	48.84	36.74	11.87	2.55	0
University provides opportunities for the continuous development of faculty	45.8	30.85	18.47	3.5	1.38

Teachers feedback of Session (2020-21)

■ Excellent / उत्कृष्ट ■ Very Good/ बहुत अच्छा ■ Good/ उत्तम
■ Satisfactory/ संतुष्ट ■ Unsatisfactory / असंतुष्ट

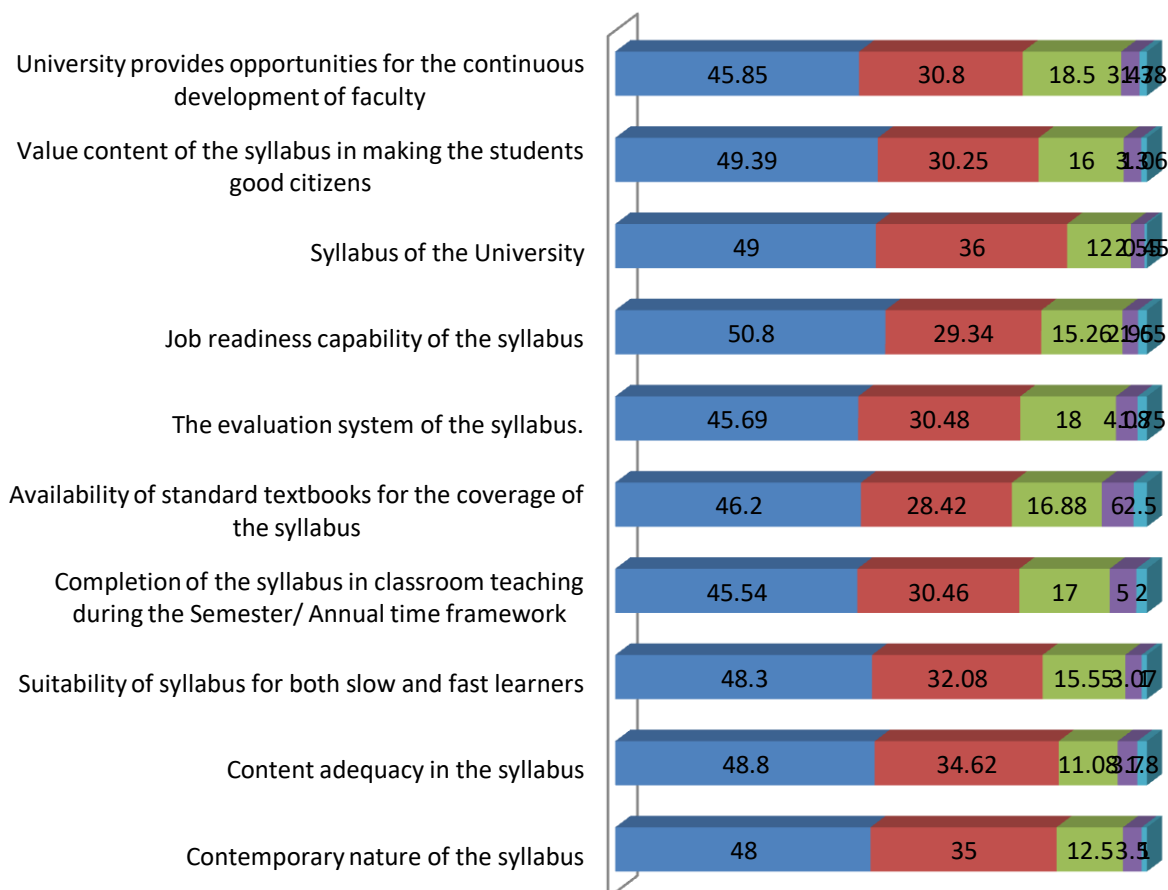


Teachers feedback of Session (2019-20)

2019-20	Excellent / उत्कृष्ट	Very Good/ बहुत अच्छा	Good/ उत्तम	Satisfactory/ संतुष्ट	Unsatisfactory / असंतुष्ट
Contemporary nature of the syllabus	48	35	12.5	3.5	1
Content adequacy in the syllabus	48.8	34.62	11.08	3.7	1.8
Suitability of syllabus for both slow and fast learners	48.3	32.08	15.55	3.07	1
Completion of the syllabus in classroom teaching during the Semester/ Annual time framework	45.54	30.46	17	5	2
Availability of standard textbooks for the coverage of the syllabus	46.2	28.42	16.88	6	2.5
The evaluation system of the syllabus.	45.69	30.48	18	4.08	1.75
Job readiness capability of the syllabus	50.8	29.34	15.26	2.95	1.65
Syllabus of the University	49	36	12	2.55	0.45
Value content of the syllabus in making the students good citizens	49.39	30.25	16	3.3	1.06
University provides opportunities for the continuous development of faculty	45.85	30.8	18.5	3.47	1.38

Teachers feedback of Session (2019-20)

■ Excellent / उत्कृष्ट ■ Very Good/ बहुत अच्छा ■ Good/ उत्तम
■ Satisfactory/ संतुष्ट ■ Unsatisfactory / असंतुष्ट

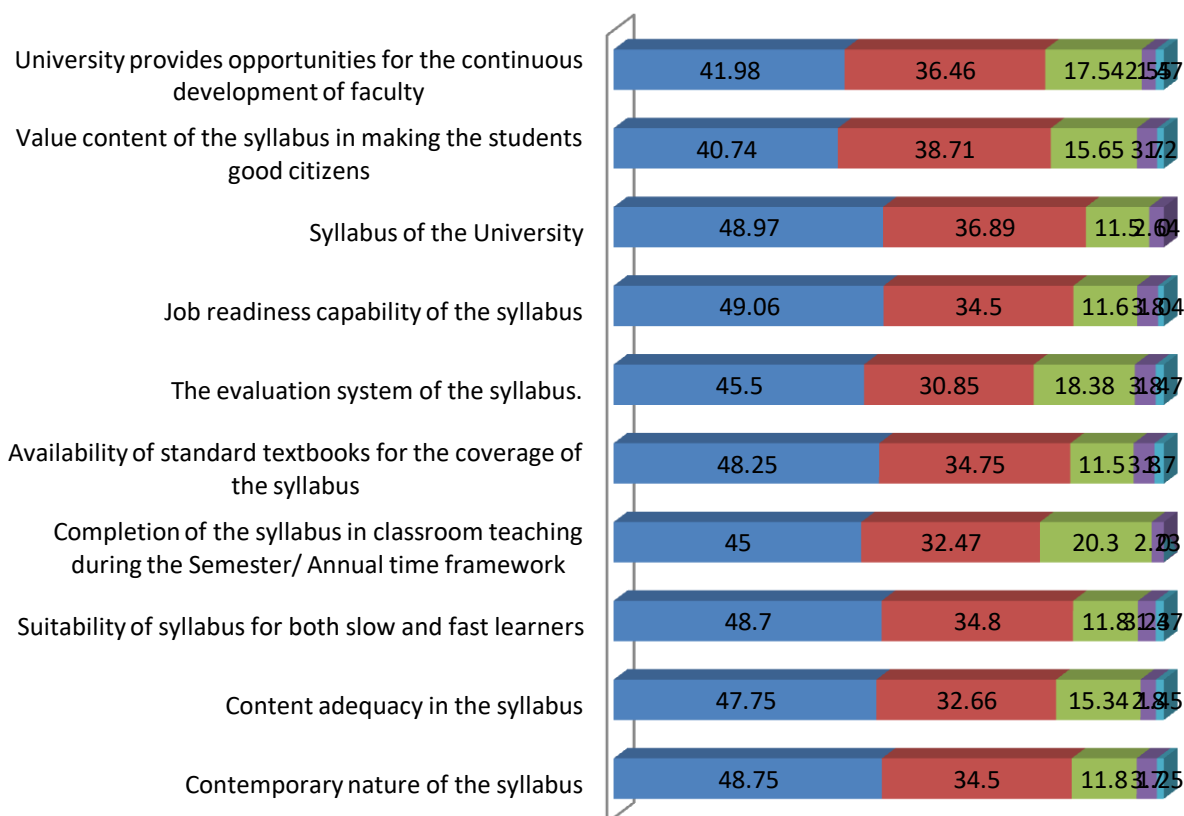


Teachers feedback of Session (2018-19)

2018-19	Excellent / उत्कृष्ट	Very Good/ बहुत अच्छा	Good/ उत्तम	Satisfactory/ संतुष्ट	Unsatisfactory / असंतुष्ट
Contemporary nature of the syllabus	48.75	34.5	11.8	3.7	1.25
Content adequacy in the syllabus	47.75	32.66	15.34	2.8	1.45
Suitability of syllabus for both slow and fast learners	48.7	34.8	11.8	3.23	1.47
Completion of the syllabus in classroom teaching during the Semester/ Annual time framework	45	32.47	20.3	2.23	0
Availability of standard textbooks for the coverage of the syllabus	48.25	34.75	11.5	3.8	1.7
The evaluation system of the syllabus.	45.5	30.85	18.38	3.8	1.47
Job readiness capability of the syllabus	49.06	34.5	11.6	3.8	1.04
Syllabus of the University	48.97	36.89	11.5	2.64	0
Value content of the syllabus in making the students good citizens	40.74	38.71	15.65	3.7	1.2
University provides opportunities for the continuous development of faculty	41.98	36.46	17.54	2.55	1.47

Teachers feedback of Session (2018-19)

■ Excellent / उत्कृष्ट ■ Very Good/ बहुत अच्छा ■ Good/ उत्तम
■ Satisfactory/ संतुष्ट ■ Unsatisfactory / असंतुष्ट



Teachers feedback of Session (2017-18)

2017-18	Excellent / उत्कृष्ट	Very Good/ बहुत अच्छा	Good/ उत्तम	Satisfactory/ संतुष्ट	Unsatisfactory / असंतुष्ट
Contemporary nature of the syllabus	45.5	30.85	18.38	3.8	1.47
Content adequacy in the syllabus	40.74	38.71	15.65	3.7	1.2
Suitability of syllabus for both slow and fast learners	48.7	34.8	11.8	3.23	1.47
Completion of the syllabus in classroom teaching during the Semester/ Annual time framework	45	32.47	20.3	2.23	0
Availability of standard textbooks for the coverage of the syllabus	48.25	34.75	11.5	3.8	1.7
The evaluation system of the syllabus.	45	30.85	18.88	3.8	1.47
Job readiness capability of the syllabus	49.06	34.5	11.6	3.8	1.04
Syllabus of the University	48.97	36.89	11.5	2.64	0
Value content of the syllabus in making the students good citizens	41.98	36.46	17.54	2.55	1.47
University provides opportunities for the continuous development of faculty	47.75	32.66	15.34	2.8	1.45

Teachers feedback of Session (2017-18)

■ Excellent / उत्कृष्ट ■ Very Good/ बहुत अच्छा ■ Good/ उत्तम
■ Satisfactory/ संतुष्ट ■ Unsatisfactory / असंतुष्ट

